

March 2018
COMMONWEALTH OF AUSTRALIA



Commonwealth Electoral Act 1918
Queensland
Map of the FEDERAL ELECTORAL DIVISION OF

FISHER

Name and Boundary of
Electoral Division

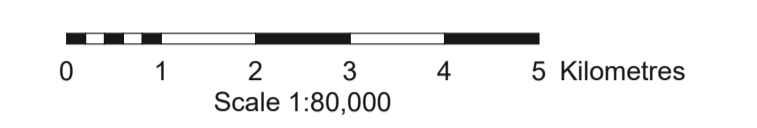
FISHER

Names and Boundaries of
adjoining Electoral Divisions

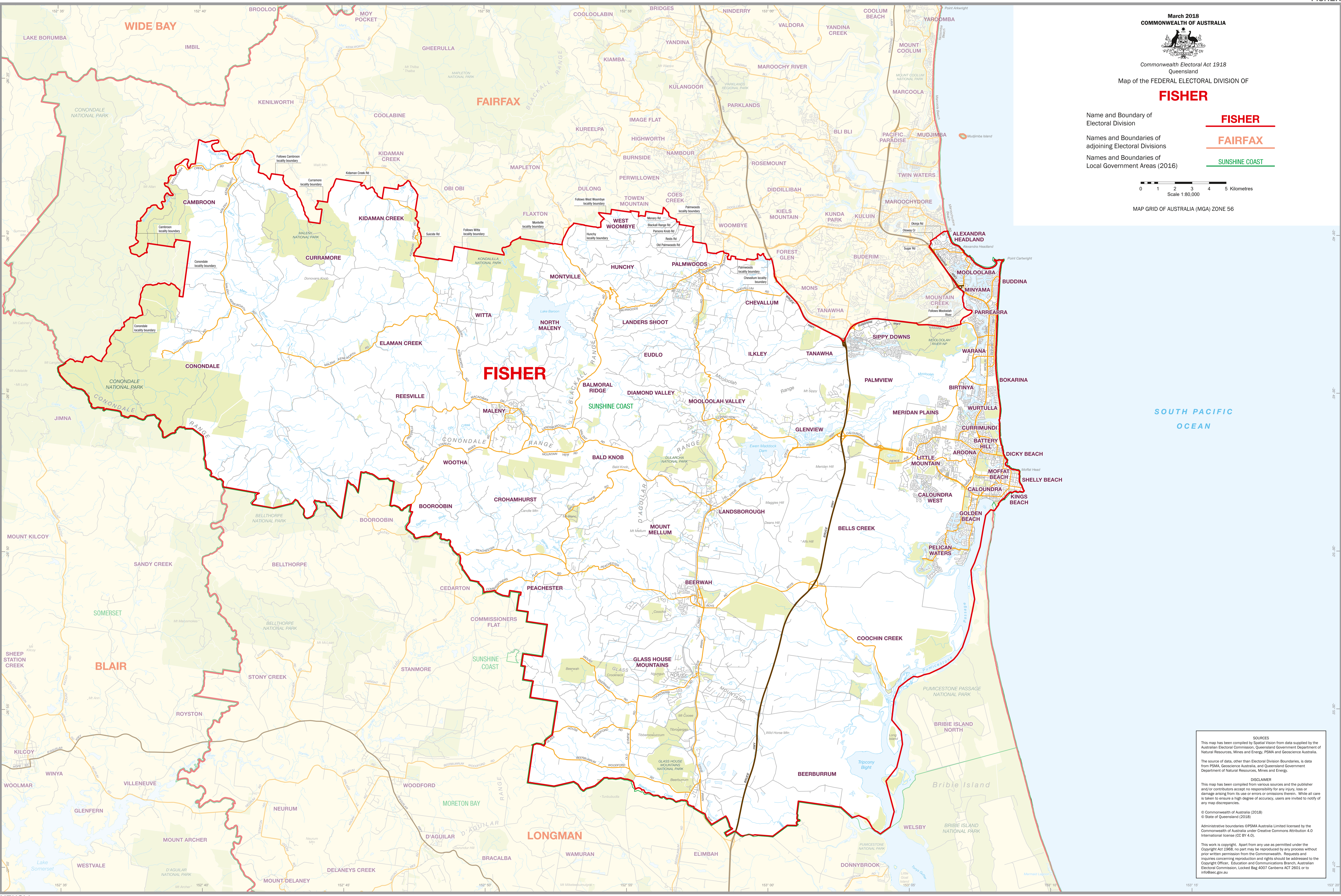
FAIRFAX

Names and Boundaries of
Local Government Areas (2016)

SUNSHINE COAST



MAP GRID OF AUSTRALIA (MGA) ZONE 56



SOUTH PACIFIC
OCEAN

SOURCES
This map has been compiled by Spatial Vision from data supplied by the Australian Electoral Commission, Queensland Government Department of Natural Resources, Mines and Energy, PSMA and Geoscience Australia.

The source of data, other than Electoral Division Boundaries, is data from PSMA, Geoscience Australia, and Queensland Government Department of Natural Resources, Mines and Energy.

DISCLAIMER
This map has been compiled from various sources and the publisher and/or contributors accept no responsibility for any injury, loss or damage arising from its use or errors or omissions therein. While all care is taken to ensure a high degree of accuracy, users are invited to notify of any map discrepancies.

© Commonwealth of Australia (2018)
© State of Queensland (2018)

Administrative boundaries ©PSMA Australia Limited licensed by the Commonwealth of Australia under Creative Commons Attribution 4.0 International license (CC BY 4.0).

This work is copyright. Apart from any use as permitted under the Copyright Act 1968, no part may be reproduced by any process without prior written permission from the Commonwealth. Requests and inquiries concerning reproduction and rights should be addressed to the Copyright Officer, Education and Communications Branch, Australian Electoral Commission, Locked Bag 4007 Canberra ACT 2601 or to info@aec.gov.au