



**THE FEDERAL
REDISTRIBUTION
NEW SOUTH WALES**

Suggestion 25

Benjamin Close

13 pages

NSW Redistribution

Enrollment quota 121,011(+/- 10%) between 108,910 and 133,112. Projected enrolment quota is 129,621(+/-3.5%). All new divisions must have a projected enrolment in the narrower band between 125,085 and 134,157

Mackellar – Current enrollment 111700 – Projected enrollment 117968.

After redistribution – Enrollment 122990 – Projected enrollment 129988

Mackellar gains 1614 electors and 1669 projected electors from SA2 122031696, gains 5323 electors and 5355 projected electors from SA2 122031437, gains 2894 electors and 3294 projected electors from SA2 122031424 and gains 1459 electors and 1702 projected electors from SA2 122031695 from Warringah. This increases Mackellar to 122990 electors and 129988 projected electors and reduces Warringah to 94469 electors and 93938 projected electors.

Warringah – Current Enrollment 105759 – Projected enrollment 105958

After redistribution – Enrollment 131449 – Projected enrollment 130899

Warringah gains 6539 electors and 6532 projected electors from SA2 121041416, gains 9194 electors and 9664 projected electors from SA2 122041413, gains 8457 electors and 8664 projected electors from SA2 122041417 and gains 12790 electors and 12101 projected electors from SA2 121041414 from North Sydney. This increases Warringah to 131449 electors and 130899 projected electors and reduces North Sydney to 75650 electors and 75605 electors.

Wentworth – Current Enrollment 104081 – Projected enrollment 102383

After redistribution – Enrollment 130487 – Projected enrollment 128374

Wentworth gains 5929 electors and 5746 projected electors from SA2 118021569, gains 7846 electors and 8523 projected electors from SA2 118021570, gains 7159 electors and 6806 projected electors from SA2 118021564, gains 10695 electors and 10815 projected electors from SA2 118021651, gains 4053 electors and 3869 projected electors from SA2 118021654 and gains 7989 electors and 7245 projected electors from SA2 121021565 from Kingsford-Smith. This increases Wentworth to 147752 electors and 145387 projected electors. This reduces Kingsford-Smith to 71810 electors and 77772 projected electors.

Sydney – Current Enrollment 122549 – Projected enrollment 121661

After redistribution – Enrollment 130232 – Projected enrollment 128914

Sydney gains 11352 electors and 10978 projected electors from SA2 118011345, gains 355 electors and 347 projected electors from SA2 117031329, gains 4726 electors and 4685 projected electors from SA2 117031640 and gains 5556 electors and 5688 projected electors from SA2 117031333 from Wentworth and gains 4726 electors and 4685 projected electors from SA2 117031640 from Grayndler. This increases Sydney to 144538 electors and 143359 projected electors. This reduces Wentworth to 130844 electors and 128721 projected electors and reduces Grayndler to 106353 electors and 106769 projected electors.

Grayndler – Current Enrollment 111079 – Projected enrollment 111454

After redistribution – Enrollment 123982 – Projected enrollment 129529

Grayndler gains 0 electors and 0 projected electors from SA2 120021674 and gains 14306 electors and 14445 projected electors from SA2 117031331 from Sydney and gains 2549 electors and 2685 projected electors from SA2 117021238, gains 608 electors and 539 projected electors from SA2 120031394 and gains 7551 electors and 8153 projected electors from SA2 117021637 from Sydney. This increases Grayndler to 131367 electors and 137276 projected electors, reduces Sydney to 130232 electors and 128914 projected electors and reduces Barton to 0 electors and 0 projected electors thereby abolishing Barton.

Reid – Current Enrollment 116485 – Projected enrollment 125674

After redistribution – Enrollment 118428 – Projected enrollment 130780

Reid gains 1132 electors and 1178 projected electors from SA2 120031677 and gains 6253 electors and 6569 projected electors from SA2 120031676 from Grayndler and gains 3110 electors and 3593 projected electors from SA2 125011586, gains 9 electors and 14 projected electors from SA2 119021632, gains 4 electors and 4 projected electors from SA2 125011475 from Watson. This increases Reid to 123870 electors and 136716 projected electors, reduces Watson to 133870 electors and 148373 projected electors and reduces Grayndler to 123982 electors and 129529 projected electors.

Parkes – Current Enrollment 110690 – Projected enrollment 109528

After redistribution – Enrollment 127231 – Projected enrollment 125633

Parkes gains 5906 electors and 5778 projected electors from SA2 110041201 from New England and gains 2424 electors and 2163 projected electors from SA2 103021068, gains 7947 electors and 7434 projected electors from SA2 103021067 and gains 10695 electors and 10815 projected electors from SA2 118021651 from Riverina. This increases Parkes to 137662 electors and 135718 projected electors. This reduces New England to 109826 electors and 109567 projected electors and reduces Riverina to 96484 electors and 96995 projected electors.

New England – Current Enrollment 115732 – Projected enrollment 115345

After redistribution – Enrollment 126729 – Projected enrollment 126980

New England gains 9 electors and 8 projected electors from SA2 110021092, gains 1790 electors and 1821 projected electors from SA2 110021093, gains 5427 electors and 5462 projected electors from SA2 110031195 and gains 3205 electors and 2794 projected electors from SA2 110031196 from Parkes and gains 9979 electors and 10740 projected electors from SA2 108041166, gains the 2771 electors and 2757 projected electors from SA2 108041165 and gains 4251 electors and 4534 projected electors from SA2 108051167 from Lyne. This increases New England to 137258 electors and 137683 projected electors.

This reduces Parkes to 127231 electors and 125633 projected electors and reduces Lyne to 109512 electors and 114744 projected electors

Lyne – Current Enrollment 126513 – Projected enrollment 132775

After redistribution – Enrollment 119276 – Projected enrollment 125400

Lyne gains 17664 electors and 18356 projected electors from SA2 10603121, gains 5473 electors and 5900 projected electors from SA2 106031120 and gains 5344 electors and 5646 projected electors from SA2 106031119 from Paterson. This increases Lyne to 137993 electors and 144646 projected electors and reduces Paterson to 106851 electors and 114922 projected electors.

Paterson – Current Enrollment 135332 – Projected enrollment 144824

After redistribution – Enrollment 125162 – Projected enrollment 133802

Paterson gains 4328 electors and 4324 projected electors from SA2 10603123, gains 6407 electors and 6985 projected electors from SA2 106021116, gains 406 electors and 411 projected electors from SA2 106021615 and gains 7576 electors and 7788 projected electors from SA2 106011110 from Lyne. This increases Paterson to 124532 electors and 134430 projected electors and reduces Lyne to 106851 electors and 114922 projected electors.

Calare– Current Enrollment 122798 – Projected enrollment 126537

After redistribution – Enrollment 129808 – Projected enrollment 133720

Calare gains 4300 electors and 4241 projected electors from SA2 106041129 and 6229 electors and 6462 projected electors from SA2 106041129 from New England. This increases Calare to 133327 electors and 137240 projected electors and reduces New England to 124090 electors and 124039 projected electors.

Shortland – Current Enrollment 117337 – Projected enrollment 122767

After redistribution – Current Enrollment 123336 – Projected enrollment 127681

Shortland gains 3834 electors and 3983 projected electors from SA2 111011209, gains 892 electors and 988 projected electors from SA2 11103233, gains 5643 electors and 5701 projected electors from SA2 111021221 and gains 12040 electors and 12729 projected electors from SA2 111021217 gains 11116 electors and 11435 projected electors from SA2 111021219 and gains 7751 electors and 8224 projected electors from SA2 111021215 from Hunter. This increases Shortland to 162663 electors and 165827 projected electors and reduces Hunter to 90312 electors and 92476 projected electors.

Hunter– Current Enrollment 131588 – Projected enrollment 135536

After redistribution – Enrollment 126189 – Projected enrollment 131250

Hunter gains 10206 electors and 10427 projected electors from SA2 111011212, gains 5194 electors and 5606 projected electors from SA2 102021052, gains 8838 electors and 10092 projected electors from SA2 102021050, gains 7498 electors and 8315 projected electors from SA2 102021046 and gains 3511 electors and 3706 projected electors from SA2 102021045 from Shortland and gains 454 electors and 433 projected electors from SA2 106011109 and gains 176 electors and 195 projected electors from SA2 106011107 from Paterson. This increases Hunter to 126186 electors and 131250 projected electors, reduces Shortland to 123336 electors and 127681 projected electors and reduces Paterson to 125162 electors and 133802 projected electors.

Riverina – Current Enrollment 117550 – Projected enrollment 117407

After redistribution – Enrollment 122772 – Projected enrollment 125512

Riverina gains 7837 electors and 8335 projected electors from SA2 101061542, gains 4997 electors and 4929 projected electors from SA2 10106151, gains 3451 electors and 3505 projected electors from SA2 113021262 and gains 4451 electors and 4299 projected electors from SA2 113021261 from Eden-Monaro, gains 1807 electors and 1852 projected electors from SA2 101061544 and gains 1374 electors and 1516 projected electors from SA2 101061542 from Hume. This increases Riverina to 122772 electors and 125512 projected electors, reduces Eden-Monaro to 95996 electors and 103334 projected electors and reduces Hume to 122368 electors and 134736 projected electors.

Eden-Monaro – Current Enrollment 116732 – Projected enrollment 124402

After redistribution – Enrollment 119015 – Projected enrollment 127425

Eden-Monaro gains 7159 electors and 7536 projected electors from SA2 101041026, gains 1953 electors and 2135 projected electors from SA2 10104024, gains 7144 electors and 7539 projected electors from SA2 101041018 and gains 6763 electors and 6881 projected electors from SA2 101041017 from Gilmore. This increases Eden-Monaro to 119015 electors and 127425 projected electors and reduces Hume to 105972 electors and 110793 projected electors.

Page– Current Enrollment 123633 – Projected enrollment 129995

After redistribution – Enrollment 126684 – Projected enrollment 133069

Page gains 2399 electors and 2421 projected electors from SA2 104021088 and 662 electors and 653 from Cowper. This increases Page to 126684 electors and 133069 projected electors and reduces Cowper to 128484 electors and 132462 projected electors.

Cowper – Current Enrollment 131515 – Projected enrollment 135536

After redistribution – Enrollment 128484 – Projected enrollment 132462

Richmond – Current Enrollment 122977 – Projected enrollment 129794

After redistribution – Enrollment 122977 – Projected enrollment 129794

Dobell – Current Enrollment 119946 – Projected enrollment 131442

After redistribution – Enrollment 122977 – Projected enrollment 129794

Robertson – Current Enrollment 112982 – Projected enrollment 125241

After redistribution – Enrollment 112982 – Projected enrollment 125241

Farrer – Current Enrollment 121734 – Projected enrollment 127265

After redistribution – Enrollment 121734 – Projected enrollment 127265

Newcastle – Current Enrollment 123370 – Projected enrollment 130623

After redistribution – Enrollment 123370 – Projected enrollment 130623

Macquarie – Current Enrollment 108671 – Projected enrollment 117867

After redistribution – Enrollment 122534 – Projected enrollment 132572

Macquarie gains 3519 electors and 3520 projected electors from SA2 103011067 from Calare, gains 4 electors and 1 projected elector from SA2 124021456 from Hume and gains 10340 electors and 11184 projected electors from SA2 101061542 from Lindsay. This increases Macquarie to 122530 electors and 132571 projected electors, reduces Calare to 129808 electors and 133720 projected electors, reduces Hume to 122364 electors and 134735 projected electors and reduces Lindsay to 117423 electors and 133150 projected electors.

Hume – Current Enrollment 125549 – Projected enrollment 138104

After redistribution – Enrollment 121968 – Projected enrollment 126970

Hume gains 341 electors and 378 projected electors from SA2 114021289, gains 7957 electors and 8625 projected electors from SA2 114021287, gains 8055 electors and 8503 projected electors from SA2 114021286, gains 45 electors and 52 projected electors from SA2 114021285, gains 3141 electors and 2906 projected electors from SA2 114021288 and gains 10427 electors and 10906 projected electors from SA2 113021261 from Whitlam. This increases Hume to 152330 electors and 166105 projected electors and reduces Whitlam to 98306 electors and 101527 projected electors.

Gilmore – Current Enrollment 128991 – Projected enrollment 134884

After redistribution – Enrollment 119015 – Projected enrollment 127425

Gilmore gains 14538 electors and 15194 projected electors from SA2 107031141 from Whitlam. This increases Eden-Monaro to 120510 electors and 125987 projected electors and reduces Whitlam to 83768 electors and 86333 projected electors.

Whitlam – Current Enrollment 128272 – Projected enrollment 132897

After redistribution – Enrollment 130799 – Projected enrollment 131725

Whitlam gains 15794 electors and 15286 projected electors from SA2 107041146, gains 1482 electors and 1483 projected electors from SA2 107011150, gains 7190 electors and 7111 projected electors from SA2 107011546, gains 11532 electors and 11751 projected electors from SA2 107041549, gains 6 electors and 6 projected electors from SA2 107011134 and gains 11027 electors and 10205 projected electors from SA2 107011134 from Cunningham. This increases Whitlam to 130799 electors and 131725 projected electors and reduces Cunningham to 71092 electors and 72027 projected electors.

Cunningham – Current Enrollment 118123 – Projected enrollment 117869

After redistribution – Enrollment 124845 – Projected enrollment 127369. Renamed Hughes.

Cunningham gains 0 electors and 0 projected electors from SA2 123021439, gains 5011 electors and 5628 projected electors from SA2 128021533, gains 12661 electors and 13511 projected electors from SA2 128021607, gains 5512 electors and 5522 projected electors from SA2 128021533, gains 0 electors and 0 projected electors from SA2 104041147, gains 1945 electors and 2285 projected electors from SA2 128011604, gains 15 electors and 14 projected electors from SA2 128021537, gains 15812 electors and 16751 projected electors from SA2 128021534, gains 8093 electors and 9047 projected electors from SA2 128021534, gains 2748 electors and 3034 projected electors from SA2 128021609 and gains 2557 electors and 2752 projected electors from SA2 128011529 from Hughes. This increases Cunningham to

127402 electors and 130121 projected electors and reduces Hughes to 53756 electors and 62057 projected electors.

Cook – Current Enrollment 111384 – Projected enrollment 125069

After redistribution – Enrollment 116012 – Projected enrollment 131487

Cook gains 16636 electors and 19644 projected electors from SA2 128021538 and gains 15805 electors and 18166 projected electors from SA2 128021536 from Hughes. This increases Cook to 146382 electors and 165631 projected electors and reduces Hughes to 21315 electors and 24587 projected electors.

Barton – Current Enrollment 112326– Projected enrollment 121919

After redistribution – Enrollment 0 – Projected enrollment 0. Abolished

Barton gains 12613 electors and 14199 projected electors from SA2 119041382, gains 3545 electors and 4181 projected electors from SA2 119041380, gains 2439 electors and 2814 projected electors from SA2 119041378, gains 3441 electors and 3861 projected electors from SA2 119041379 and gains 5775 electors and 6337 projected electors from SA2 119031374 from Cook. This increases Barton to 140139 electors and 153311 projected electors and reduces Cook to 118569 electors and 134239 projected electors.

Kingsford-Smith – Current Enrollment 115481 – Projected enrollment 120776

After redistribution – Enrollment 119755 – Projected enrollment 131324

Kingsford-Smith gains 9950 electors and 10778 projected electors from SA2 119041667, gains 11492 electors and 12399 projected electors from SA2 119041381, gains 10125 electors and 11628 projected electors from SA2 119041380, gains 12613 electors and 14199 projected electors from SA2 119041382 and gains 3765 electors and 4548 projected electors from SA2 119041671 from Barton. This increases Kingsford-Smith to 119755 electors and 131324 projected electors and reduces Barton to 92194 electors and 99759 projected electors.

Watson – Current Enrollment 110765 – Projected enrollment 123370

After redistribution – Enrollment 115645 – Projected enrollment 127853

Watson gains 13537 electors and 15009 projected electors from SA2 119021662, gains 1054 electors and 1035 projected electors from SA2 120031382, gains 6488 electors and 6719 projected electors from SA2 119021661, gains 2357 electors and 2672 projected electors from SA2 119021663, gains 283 electors and 302 projected electors from SA2 119021362 and gains 2509 electors and 2877 projected electors from SA2 119031370 from Barton. This increases Watson to 136993 electors and 151984 projected electors and reduces Barton to 65966 electors and 71145 projected electors.

Banks – Current Enrollment 108512 – Projected enrollment 119557

After redistribution – Enrollment 124843 – Projected enrollment 127271

Banks gains 9278 electors and 10255 projected electors from SA2 119041377, gains 7345 electors and 7796 projected electors from SA2 119041378, gains 6849 electors and 6991 projected electors from SA2 119051669, gains 9818 electors and 10966 projected electors from SA2 119041670, gains 3948 electors

and 4421 projected electors from SA2 119041379, gains 4673 electors and 5050 projected electors from SA2 119031664, gains 7572 electors and 7952 projected electors from SA2 119031370 and gains 5775 electors and 6337 projected electors from SA2 119031374 from Barton. This increases Banks to 171566 electors and 179325 projected electors and reduces Barton to 10708 electors and 11377 projected electors.

Macarthur – Current Enrollment 140280– Projected enrollment 171700

After redistribution – Enrollment 120829 – Projected enrollment 133056

Macarthur gains 9119 electors and 10434 projected electors from SA2 123021706, gains 1074 electors and 1480 projected electors from SA2 123021705, gains 7556 electors and 12443 projected electors from SA2 127031730 and gains 6423 electors and 7353 projected electors from SA2 123021704 from Werriwa. This increases Macarthur to 164452 electors and 190835 projected electors and reduces Werriwa to 104223 electors and 127344 projected electors.

Werriwa – Current Enrollment 132460– Projected enrollment 159054

After redistribution – Enrollment 109746 – Projected enrollment 133533. Renamed Walton.

Werriwa gains 3199 electors and 4332 projected electors from SA2 127011726, gains 6399 electors and 9088 projected electors from SA2 123011702, gains 13471 electors and 15895 projected electors from SA2 123011701, gains 797 electors and 941 projected electors from SA2 127011505, gains 4756 electors and 4874 projected electors from SA2 124031463 and gains 1740 electors and 1763 projected electors from SA2 124031463 electors from Hume and gains 13622 electors and 14304 projected electors from SA2 128011604, gains 4365 electors and 4975 projected electors from SA2 123021439, gains 0 electors and 0 projected electors from SA2 123011699, gains 5245 electors and 9295 projected electors from SA2 123021703, gains 8723 electors and 12469 projected electors from SA2 127011728, gains 11429 electors and 16531 projected electors from SA2 127011729 and gains 239 electors and 205 projected electors from SA2 127011726 from Macarthur. This increases Werriwa to 178208 electors and 222106 projected electors, reduces Hume to 121968 electors and 126970 projected electors and reduces Macarthur to 120829 electors and 133056 projected electors.

Hughes – Current Enrollment 108110 – Projected enrollment 120601

After redistribution – Enrollment 115804 – Projected enrollment 131683. Renamed Werriwa

Hughes gains 6572 electors and 7068 projected electors from SA2 127031523, gains 3553 electors and 4017 projected electors from SA2 127031601, gains 10048 electors and 11366 projected electors from SA2 127031731 and gains 8594 electors and 9450 projected electors from SA2 127031731 from Fowler and gains 11187 electors and 12683 projected electors from SA2 127031522, gains 10523 electors and 13875 projected electors from SA2 127031733, gains 7863 electors and 9050 projected electors from SA2 127031599, gains 11116 electors and 11596 projected electors from SA2 127011597, gains 11171 electors and 12173 projected electors from SA2 12701505, gains 8813 electors and 10212 projected electors from SA2 127011595 and gains 5049 electors and 5606 projected electors from SA2 127011593 from Werriwa. This increases Banks to 115804 electors and 131683 projected electors, reduces Werriwa to 112486 electors and 146911 projected electors and reduces Fowler to 83647 electors and 95723 projected electors.

Bradfield – Current Enrollment 109126 – Projected enrollment 109523

After redistribution – Enrollment 126342 – Projected enrollment 126833

Bradfield gains 7661 electors and 7844 projected electors from SA2 121011683, gains 4685 electors and 4506 projected electors from SA2 121011684, gains 8605 electors and 8685 projected electors from SA2 121011687, gains 7672 electors and 7878 projected electors from SA2 121011401 and gains 5557 electors and 5298 projected electors from SA2 121011682 from North Sydney. This increases Bradfield to 143306 electors and 143770 projected electors and reduces North Sydney to 41470 electors and 41394 projected electors.

Berowra – Current Enrollment 106739 – Projected enrollment 109154

After redistribution – Enrollment 126342 – Projected enrollment 126833

Berowra gains 1792 electors and 1771 projected electors from SA2 121021403, gains 6748 electors and 6205 projected electors from SA2 121021577, gains 6526 electors and 7006 projected electors from SA2 121021579 and gains 1898 electors and 1919 projected electors from SA2 121021406 from Bradfield. This increases Berowra to 123703 electors and 126055 projected electors and reduces Bradfield to 126342 electors and 126833 projected electors.

Bennelong – Current Enrollment 116790 – Projected enrollment 122124

After redistribution – Enrollment 123698 – Projected enrollment 127439

Bennelong gains 11806 electors and 11570 projected electors from SA2 121011389, gains 7226 electors and 7368 projected electors from SA2 126021489, gains 2806 electors and 2893 projected electors from SA2 126021498, gains 9112 electors and 9312 projected electors from SA2 121011685 and gains 10480 electors and 10799 projected electors from SA2 121011686 from North Sydney. This increases Bradfield to 158220 electors and 164066 projected electors and reduces North Sydney to 0 electors and 0 projected electors thereby abolishing North Sydney.

North Sydney – Current Enrollment 105759 – Projected enrollment 112566

After redistribution – Enrollment 0 – Projected enrollment 0. Abolished

Mitchell – Current Enrollment 126812 – Projected enrollment 148572

After redistribution – Enrollment 109234 – Projected enrollment 129752

Greenway – Current Enrollment 125882 – Projected enrollment 144152

After redistribution – Enrollment 112954 – Projected enrollment 129323

Chifley – Current Enrollment 126954 – Projected enrollment 148639

After redistribution – Enrollment 114143 – Projected enrollment 131354

Chifley gains 2 electors and 0 projected electors from SA2 116031318, gains 11 electors and 19 projected electors from SA2 116011626, gains 3953 electors and 4435 projected electors from SA2 116031319 and gains 895 electors and 965 projected electors from SA2 125041588 from McMahon and gains 895 electors and 965 projected electors from SA2 125041588 from McMahon and gains 8007 electors and

8964 projected electors from SA2 116011560 from Greenway. This increases Chifley to 139821 electors and 163022 projected electors, reduces McMahon to 106432 electors and 120398 projected electors and reduces Greenway to 112954 electors and 129323 projected electors.

Lindsay – Current Enrollment 127763– Projected enrollment 144334

After redistribution – Enrollment 109096 – Projected enrollment 127922

Lindsay gains 11564 electors and 15997 projected electors from SA2 116021629, gains 967 electors and 1033 projected electors from SA2 116021630 and gains 13147 electors and 14638 projected electors from SA2 116021631 from Chifley. This increases Lindsay to 143101 electors and 164818 projected electors and reduces Chifley to 114143 electors and 131354 projected electors.

McMahon – Current Enrollment 111293 – Projected enrollment 125817

After redistribution – Enrollment 115711 – Projected enrollment 129076. Becomes Bradman.

McMahon gains 1204 electors and 1376 projected electors from SA2 127021512, gains 8924 electors and 9832 projected electors from SA2 127021509 and gains 1740 electors and 1763 projected electors from SA2 124031463 from Werriwa and gains 6726 electors and 7872 projected electors from SA2 124031461, gains 12554 electors and 13855 projected electors from SA2 124031463 and gains 14725 electors and 15569 projected electors from SA2 124031460 from Lindsay and gains 12925 electors and 15200 projected electors from SA2 127021510, gains 2852 electors and 3322 projected electors from SA2 127021509, gains 7097 electors and 8154 projected electors from SA2 127021514, gains 8003 electors and 8804 projected electors from SA2 127021520, gains 5793 electors and 6844 projected electors from SA2 127021517 and gains 10682 electors and 12110 projected electors from SA2 127021512 from Fowler. This increases McMahon to 199657 electors and 225095 projected electors, reduces Lindsay to 109096 electors and 127922 projected electors, reduces Fowler to 36295 electors and 41289 projected electors and reduces Werriwa to 109746 electors and 133533 projected electors.

Parramatta – Current Enrollment 109049 – Projected enrollment 119570

After redistribution – Enrollment 116267 – Projected enrollment 124787

Parramatta gains 7795 electors and 8754 projected electors from SA2 125041494, gains 6614 electors and 6903 projected electors from SA2 125041491 and gains 3169 electors and 3163 projected electors from SA2 121011686 from Mitchell and gains 10537 electors and 10621 projected electors from SA2 126011721, gains 8460 electors and 8892 projected electors from SA2 127011720 and gains 7010 electors and 7103 projected electors from SA2 125011711 from Bennelong. This increases Parramatta to 152634 electors and 165006 projected electors, reduces Mitchell to 109234 electors and 129752 projected electors and reduces Bennelong to 123698 electors and 127439 projected electors.

Fowler – Current Enrollment 112414 – Projected enrollment 127624

After redistribution – Enrollment 119785 – Projected enrollment 130971. Becomes new McMahon.

Fowler gains 7276 electors and 7994 projected electors from SA2 125031715, gains 11720 electors and 13183 projected electors from SA2 125031713, gains 9 electors and 9 projected electors from SA2 125031486, gains 12 electors and 12 projected electors from SA2 125031487, gains 13786 electors and 15818 projected electors from SA2 125031484, gains 4083 electors and 4677 projected electors from

SA2 125031483, gains 5314 electors and 5874 projected electors from SA2 125031714, 1375 electors and 1578 projected electors from SA2 125021513, gains 11675 electors and 13732 projected electors from SA2 127021516, gains 10424 electors and 11940 projected electors from SA2 127021515, gains 2766 electors and 3294 projected electors from SA2 125021480, gains 3009 electors and 3392 projected electors from SA2 125031716 and gains 12476 electors and 14516 projected electors from SA2 125021519 from McMahon gains 5146 electors and 5865 projected electors from SA2 125041588 from Greenway and gains 1666 electors and 1804 projected electors from SA2 125051588, gains 1864 electors and 2062 projected electors from SA2 125031716, gains 10161 electors and 11143 projected electors from SA2 125041589, gains 8225 electors and 9242 projected electors from SA2 125031714, gains 12067 electors and 13277 projected electors from SA2 125031481 and gains 2384 electors and 2691 projected electors from SA2 125031483 from Parramatta. This increases Fowler to 161733 electors and 180300 projected electors, reduces Greenway to 112954 electors and 129323 projected electors, reduces Parramatta to 116267 electors and 124787 projected electors and reduces McMahon to 115711 electors and 129076 projected electors.

Blaxland – Current Enrollment 110001 – Projected enrollment 122692

After redistribution – Enrollment 229424 – Projected enrollment 253915

Blaxland gains 9875 electors and 11512 projected electors from SA2 125021480, gains 4873 electors and 5454 projected electors from SA2 125031716, gains 13539 electors and 15116 projected electors from SA2 125031714, gains 6467 electors and 7368 projected electors from SA2 125031483 and gains 12067 electors and 13277 projected electors from SA2 116021631 from Fowler, gains 9527 electors and 10866 projected electors from SA2 119011656, gains 9 electors and 14 projected electors and gains 8679 electors and 9640 projected electors from SA2 119011656 from Watson, gains 6995 electors and 7723 projected electors from SA2 119031373, gains 11577 electors and 13043 projected electors from SA2 119011658, gains 5053 electors and 5916 projected electors from SA2 119011657, gains 10541 electors and 11896 projected electors from SA2 119011360 and gains 12556 electors and 13476 projected electors from SA2 119011358 from Banks and gains 5442 electors and 5936 projected electors from SA2 125011586 from Reid. This increases Blaxland to 227201 electors and 253929 projected electors, reduces Banks to 124843 electors and 127271 projected electors, reduces Watson to 115645 electors and 127853 projected electors and reduces Reid to 118428 electors and 130780 projected electors.

A new division named Pemulwuy has been created.

Pemulwuy – Current Enrollment 227201 – Projected enrollment 253929

Blaxland – Current Enrollment 0 – Projected enrollment 0

Pemulwuy After redistribution – Enrollment 116490 – Projected enrollment 127677

Blaxland After redistribution – Enrollment 110711 – Projected enrollment 126252

Blaxland gains 3098 electors and 3649 projected electors from SA2 125011587, gains 819 electors and 1022 projected electors from SA2 119011355, gains 11577 electors and 13043 projected electors from SA2 119011658, gains 7319 electors and 9236 projected electors from SA2 119011571, gains 11933 electors and 13487 projected electors from SA2 119011360, gains 8679 electors and 9640 projected electors from SA2 119011656, gains 9527 electors and 10864 projected electors from SA2 119011655,

gains 8011 electors and 9168 projected electors from SA2 119011657, gains 12256 electors and 13476 projected electors from SA2 119011358, gains 7782 electors and 9029 projected electors from SA2 119011572, gains 6995 electors and 7723 projected electors from SA2 119031373, gains 14343 electors and 16384 projected electors from SA2 119011361 and gains 8372 electors and 9531 projected electors from SA2 119011356 from Pemulwuy. This increases Blaxland to 110711 electors and 126252 projected electors and reduces Pemulwuy to 116490 electors and 127677 electors.

name changes

Cunningham becomes Hughes to preserve the name of a PM

Hughes becomes Werriwa to preserve a federation name and aboriginal word

Grayndler becomes Barton to preserve the name of a PM

The new South West Sydney division named Walton after Nancy Bird Walton who was a pioneering Australian aviator, known as "The Angel of the Outback" and the founder and patron of the Australian Women Pilots' Association.

The new North West Sydney division named Bradman after Donald Bradman no explanation needed of who he is.

The New Central Sydney division named Pemulwuy after aboriginal political and resistance leader Pemulwuy.

Calare renamed Brock after motor racing legend Peter Brock and as the "Calare" name no longer applies as the Lachlan River is no longer in the division

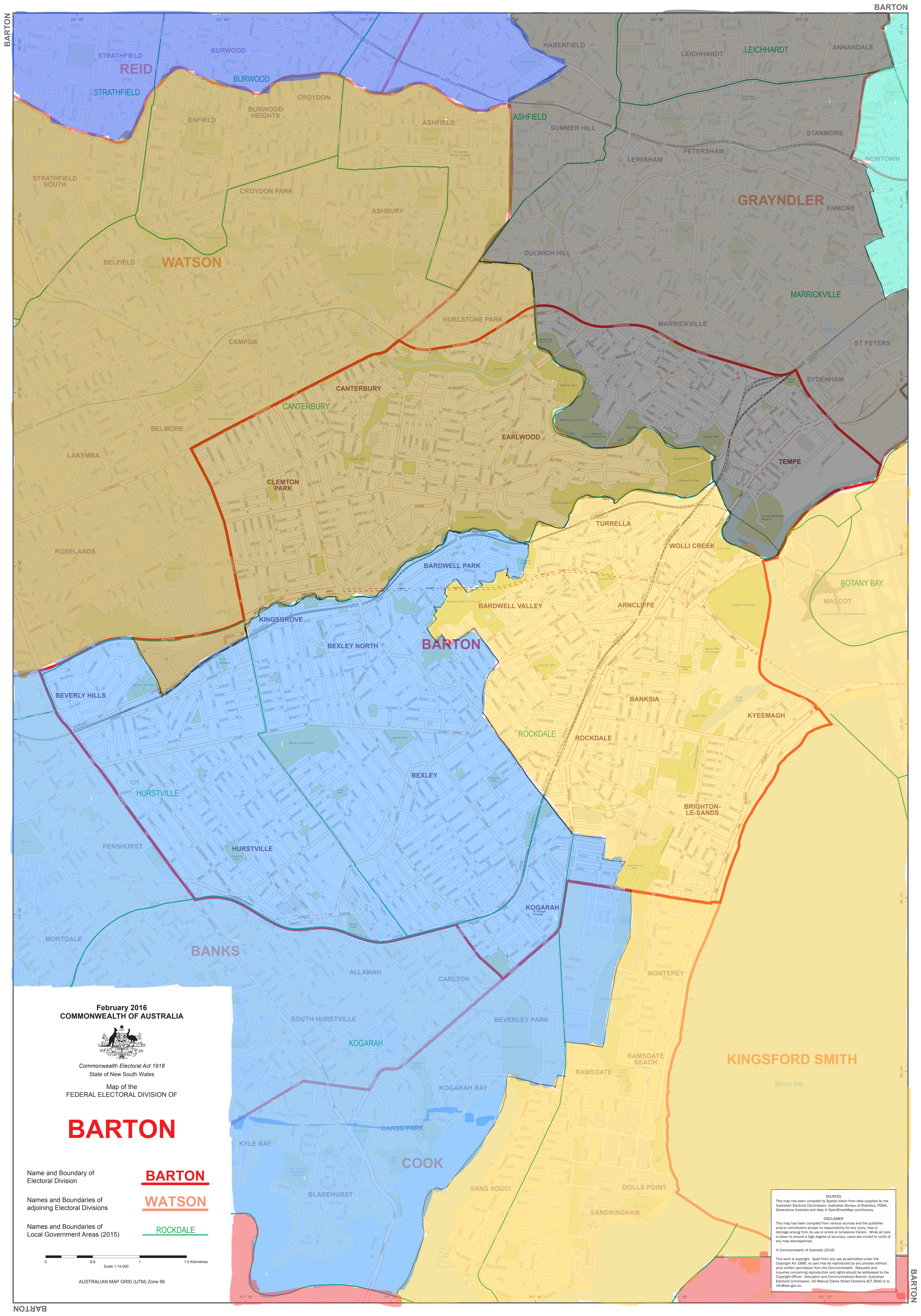
Cook namesake now includes PM Joseph Cook.

Fowler takes over much of the former territory of McMahon so becomes the new McMahon to preserve the name of a PM.

Warringah becomes Sydney Harbour

Abolished: North Sydney, Cunningham, Warringah, Fowler, Grayndler, Calare.

Created: Pemulwuy, Bradman, Walton, Sydney Harbour, Brock.



February 2016
COMMONWEALTH OF AUSTRALIA



Commonwealth Electoral Act 1918
State of New South Wales

Map of the
FEDERAL ELECTORAL DIVISION OF

BARTON

Name and Boundary of
Electoral Division

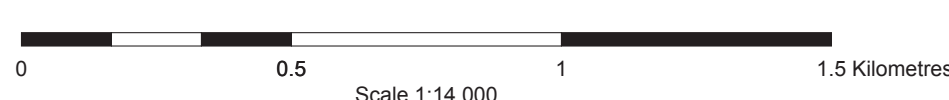
BARTON

Names and Boundaries of
adjoining Electoral Divisions

WATSON

Names and Boundaries of
Local Government Areas (2015)

ROCKDALE



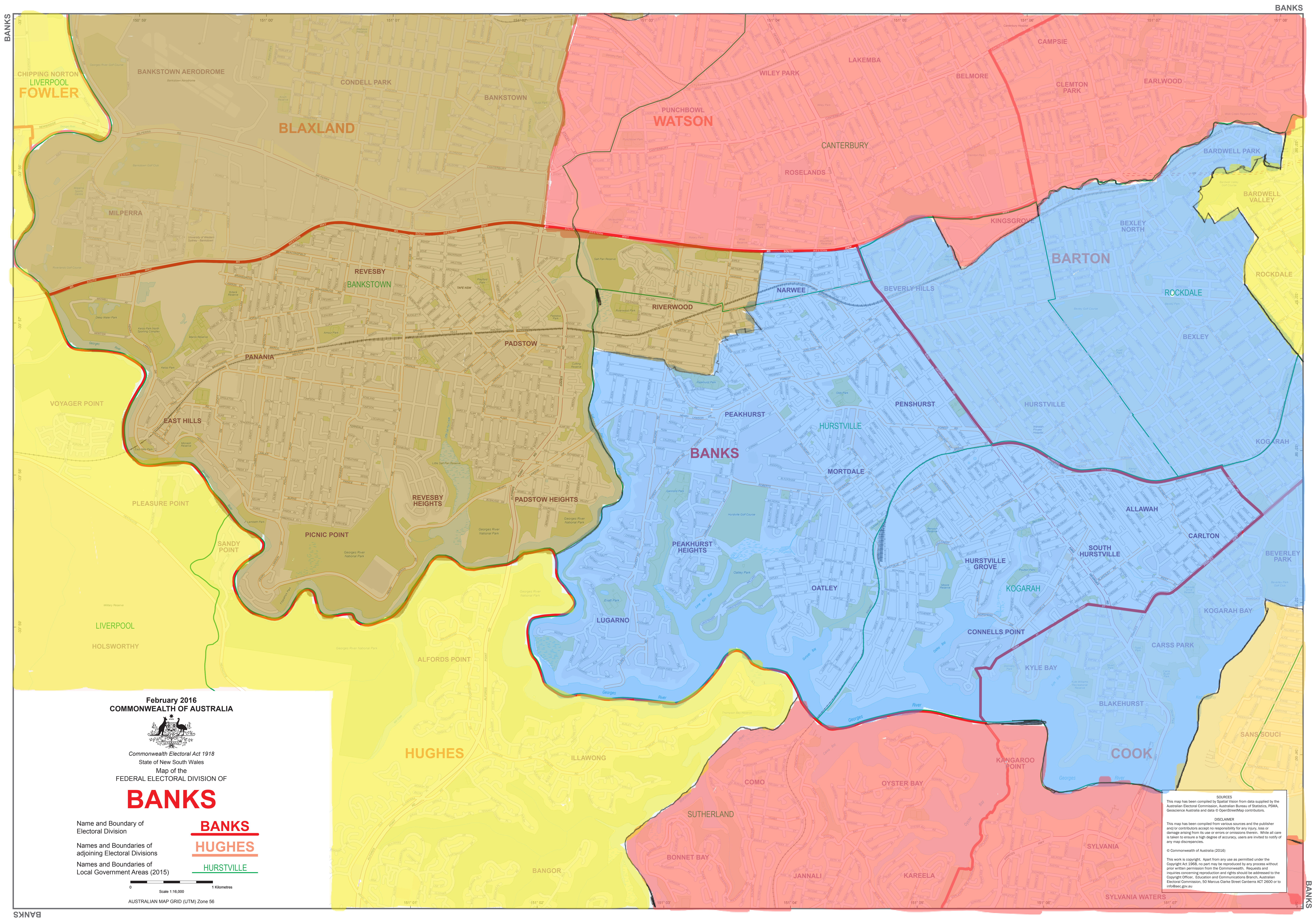
AUSTRALIAN MAP GRID (UTM) Zone 56

SOURCES
This map has been compiled by Spatial Vision from data supplied by the Australian Electoral Commission, Australian Bureau of Statistics, PSMA, Geoscience Australia and data © OpenStreetMap contributors.

DISCLAIMER
This map has been compiled from various sources and the publisher and/or contributors accept no responsibility for any injury, loss or damage arising from its use or errors or omissions therein. While all care is taken to ensure a high degree of accuracy, users are invited to notify of any map discrepancies.

© Commonwealth of Australia (2016)

This work is copyright. Apart from any use as permitted under the Copyright Act 1968, no part may be reproduced by any process without prior written permission from the Commonwealth. Requests and inquiries concerning reproduction and rights should be addressed to the Copyright Officer, Education and Communications Branch, Australian Electoral Commission, 50 Marcus Clarke Street Canberra ACT 2600 or to info@aec.gov.au



February 2016
COMMONWEALTH OF AUSTRALIA



Commonwealth Electoral Act 1918
State of New South Wales
Map of the
FEDERAL ELECTORAL DIVISION OF

BANKS

Name and Boundary of
Electoral Division

Names and Boundaries of
adjoining Electoral Divisions

Names and Boundaries of
Local Government Areas (2015)

BANKS
HUGHES
HURSTVILLE

0 1 Kilometres
Scale 1:16,000
AUSTRALIAN MAP GRID (UTM) Zone 56

SOURCES
This map has been compiled by Spatial Vision from data supplied by the Australian Electoral Commission, Australian Bureau of Statistics, PSMA, Geoscience Australia and data © OpenStreetMap contributors.

DISCLAIMER
This map has been compiled from various sources and the publisher and/or contributors accept no responsibility for any injury, loss or damage arising from its use or errors or omissions therein. While all care is taken to ensure a high degree of accuracy, users are invited to notify of any map discrepancies.

© Commonwealth of Australia (2016)

This work is copyright. Apart from any use as permitted under the Copyright Act 1968, no part may be reproduced by any process without prior written permission from the Commonwealth. Requests and inquiries concerning reproduction and rights should be addressed to the Copyright Officer, Education and Communications Branch, Australian Electoral Commission, 50 Marcus Clarke Street Canberra ACT 2600 or to info@aec.gov.au