



**THE FEDERAL  
REDISTRIBUTION  
NEW SOUTH WALES**

# Suggestion 10

PJ

8 pages

Dear Commissioner,

I am making a submission for just the North Coast of New South Wales. I am restricting my proposal to this region as I believe that it can be managed by making changes within the 11 electorates of Richmond, Page, Cowper, Lyne, Paterson, Newcastle, Shortland, Dobell, Robertson, Hunter and New England only (with only a tiny transfer outside this region, to Calare). While clearly this redistribution requires one (and probably two) electorate abolitions across the state, I think these should be done outside of the North Coast region. I hope this is of assistance.

### **Proposed changes**

#### **1. Richmond**

##### **Proposed changes:**

Richmond is nearly right on quota for projected numbers and doesn't require any change.

**Projected numbers:  $129,794 + 0 = 129,794$**

#### **2. Page**

##### **Proposed changes:**

Page should lose a projected 5,834 voters in Kyogle Shire to New England.

To compensate, Page should pick up 2,421 projected voters from the Korora - Emerald Beach SA2 and 1,780 projected voters from the Dorrigo SA2 from Cowper.

These changes will leave Page very slightly under quota on projected figures, but well within the allowable range.

**Projected numbers:  $129,995 - 5,834 + 2,421 + 1,780 = 128,362$**

#### **3. Cowper**

##### **Proposed changes:**

Cowper should lose 2,421 projected voters from the Korora - Emerald Beach SA2 and 1,780 projected voters from the Dorrigo SA2 to Page.

These changes will leave Cowper slightly above quota on projected figures, but well within the allowable range.

**Projected numbers:  $135,536 - 2,421 - 1,780 = 131,335$**

#### **4. Lyne**

##### **Proposed changes:**

Lyne should lose 4,534 projected voters from Gloucester SA2 and 7,780 projected voters in Dungog SA2 to New England.

Lyne should also lose 6,723 projected voters in Maitland – North SA2, 4,324 projected voters in the Seaham – Woodville SA2 and 411 projected voters in Rutherford (North) – Aberglasslyn SA2 to Paterson.

In turn, Lyne should pick up 23,317 projected voters from the Nelson Bay Peninsula and Lemon Tree Passage - Tanilba Bay SA2s, with the border between Paterson and Lyne moving to be the western edge of Port Stephens/the Karuah River, to allow geographic continuity in the Lyne electorate.

These changes make Lyne more of a coastal electorate and allow Paterson to be more focussed on the Hunter Valley suburbs and towns. I think there is a strong argument for the southern shore of the Port Stephens area to be in the same electorate as Tea Gardens, and those communities north of the Bay, as well as a strong argument for uniting Maitland with surrounding Hunter Valley communities (in Paterson). While slightly above quota on projected figures, this is within the allowable range.

**Projected numbers:  $132,775 - 4,534 - 7,780 - 6,723 - 4,324 - 411 + 23,317 = 132,320$**

## **5. Paterson**

### **Proposed changes:**

Paterson should move inland, losing 23,317 projected voters from the Nelson Bay Peninsula and Lemon Tree Passage - Tanilba Bay SA2s to Lyne, with the border between Paterson and Lyne moving to be the western edge of Port Stephens/the Karuah River.

It should also lose a projected 4,567 voters in Stockton - Fullerton Cove SA2 to Newcastle.

Paterson should in turn pick up from Lyne 6,723 projected voters in Maitland – North SA2, 4,324 projected voters in the Seaham – Woodville SA2 and 411 projected voters in Rutherford (North) – Aberglasslyn SA2.

These changes make Paterson more of an inland electorate and creates greater communities of interest around the Maitland area.

**Projected numbers:  $144,824 - 23,317 - 4,567 + 6,723 + 6,324 + 411 = 130,398$**

## **6. Newcastle, Shortland, Robertson and Dobell**

### **Proposed changes:**

Robertson should pick up approximately 3,000 voters from Dobell around Wyoming Town Centre, bringing both of these electorates back to quota.

Shortland pick up 2,869 projected voters from Newcastle in the Glendale - Cardiff – Hillsborough SA2 and a further ~3,000 voters from the suburb of Elermore Vale, in the southern part of the Wallsend - Elermore Vale SA2.

Newcastle should in turn take the projected 4,567 voters from the Stockton - Fullerton Cove SA2 from Paterson.

This will bring Shortland, Newcastle and Paterson to projected quota.

### **Projected numbers**

**Newcastle:  $130,623 - 2869 - 3,000$  (approximate) + 4,567 = 129,321**

**Shortland:  $122,767 + 2,869 + 3,000$  (approximate) = 128,636**

**Robertson:  $125,241 + 3,000$  (approximate) = 128,241**

**Dobell:  $131,442 - 3,000$  (approximate) = 128,442**

## 7. Hunter

### Proposed changes

Hunter should lose all of SA2 'Muswellbrook Surrounds', excluding SA1 '10604112710' to Calare. In effect, this transfers all of the rural parts of the electorate that are west of Muswellbrook township to Calare, while retaining the communities of Muscle Creek and McCullys Gap in Hunter. The Muswellbrook Surrounds SA2 has a projected figure of 3,217. Taking away the project 498 voters in the 10604112710 SA1 area (that is east of Muswellbrook township), this sees 2,719 projected voters transferred to Calare and brings Hunter back to within the allowable projected quota.

**Projected numbers: 135,536 – 2,719 = 132,817**

## 8. New England

### Proposed changes

New England is badly under-quota and needs around 15,000 new projected voters from a number of surrounding electorates to get back to projected quota. These should include:

- Transfer of 5,834 projected voters in Kyogle SA2 from Page.
- Transfer of 4,534 projected voters in Gloucester SA2 from Lyne.
- Transfer of 7,780 projected voters in Dungog SA2 from Lyne.

There is a fair argument that if New England moves east as proposed above that it is no longer exclusively in the region of New England, and should be renamed accordingly, though I will leave suggestions for a new name for others.

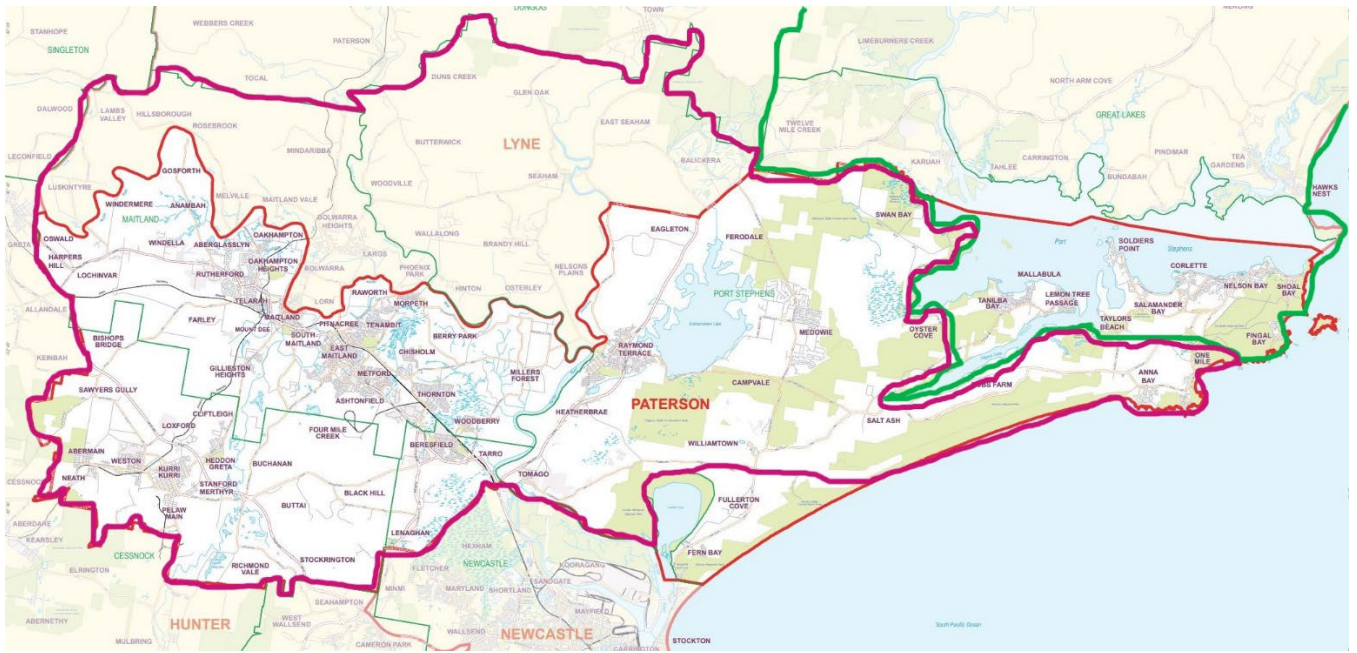
**Projected numbers: 115,345 + 5,834 + 4,534 + 7,780 = 133,493**

If adopted, the maps for the North Coast would look like this:

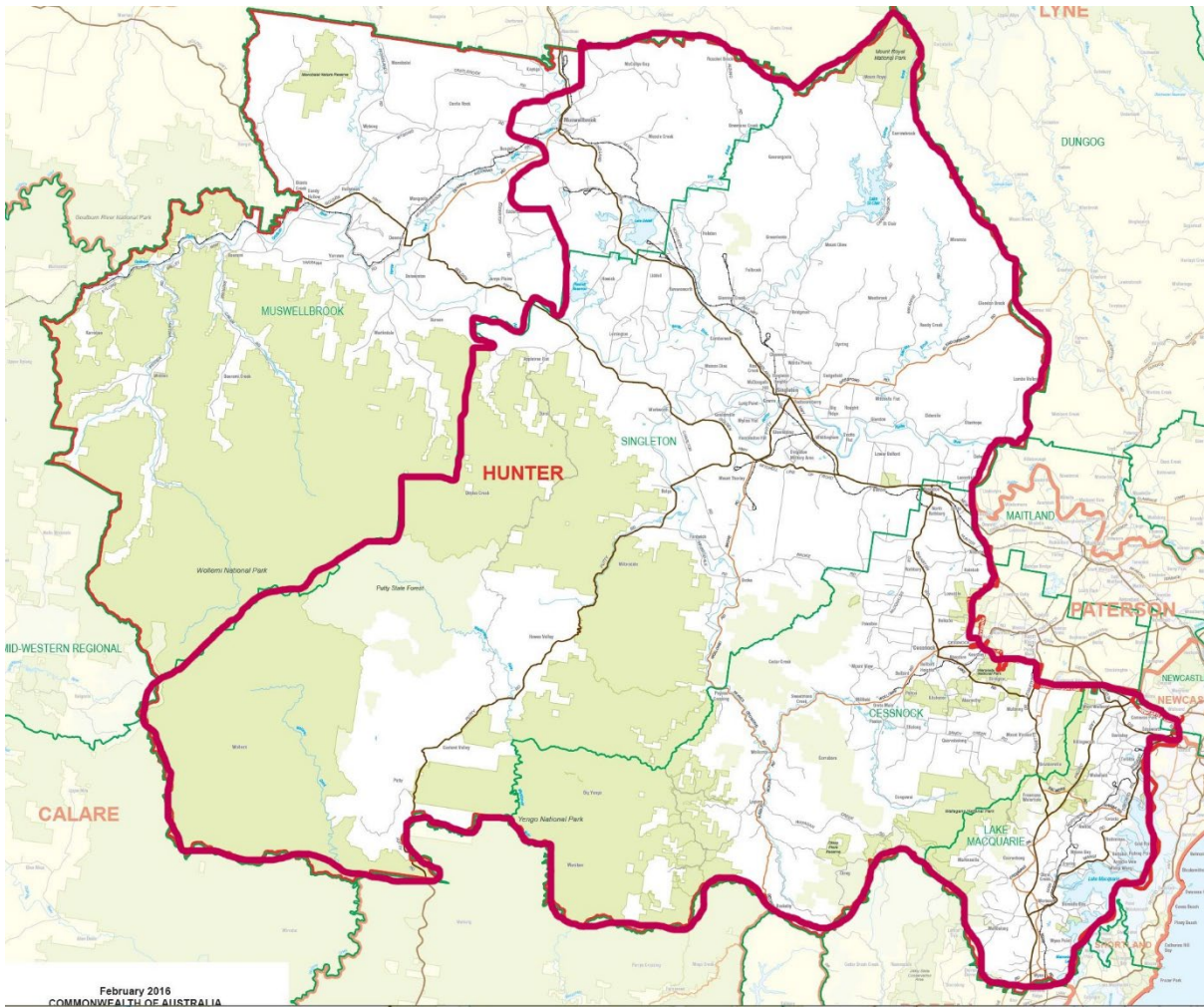
**Robertson, Dobell, Shortland, Newcastle**



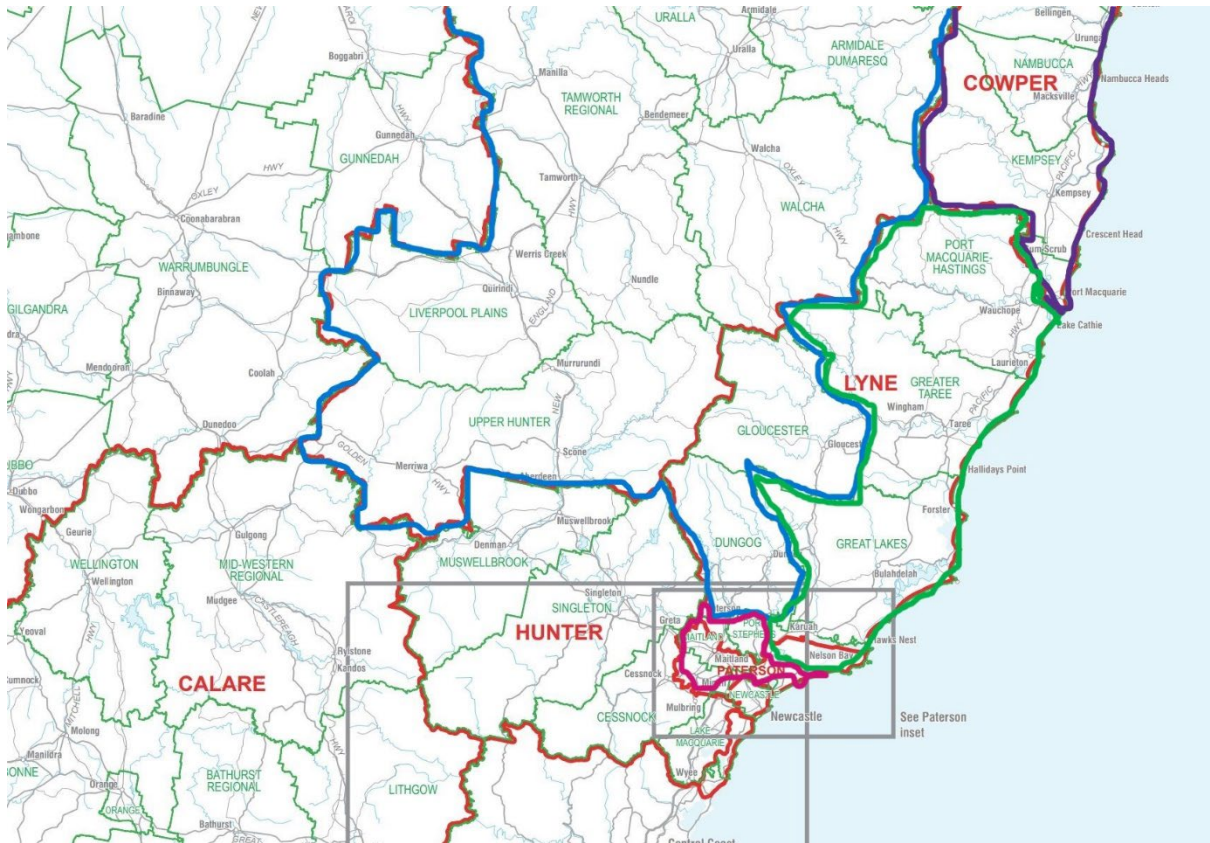
# Paterson



# Hunter



# Paterson, Lyne, Cowper, New England





# Lyne, Cowper, New England, Page, Richmond

