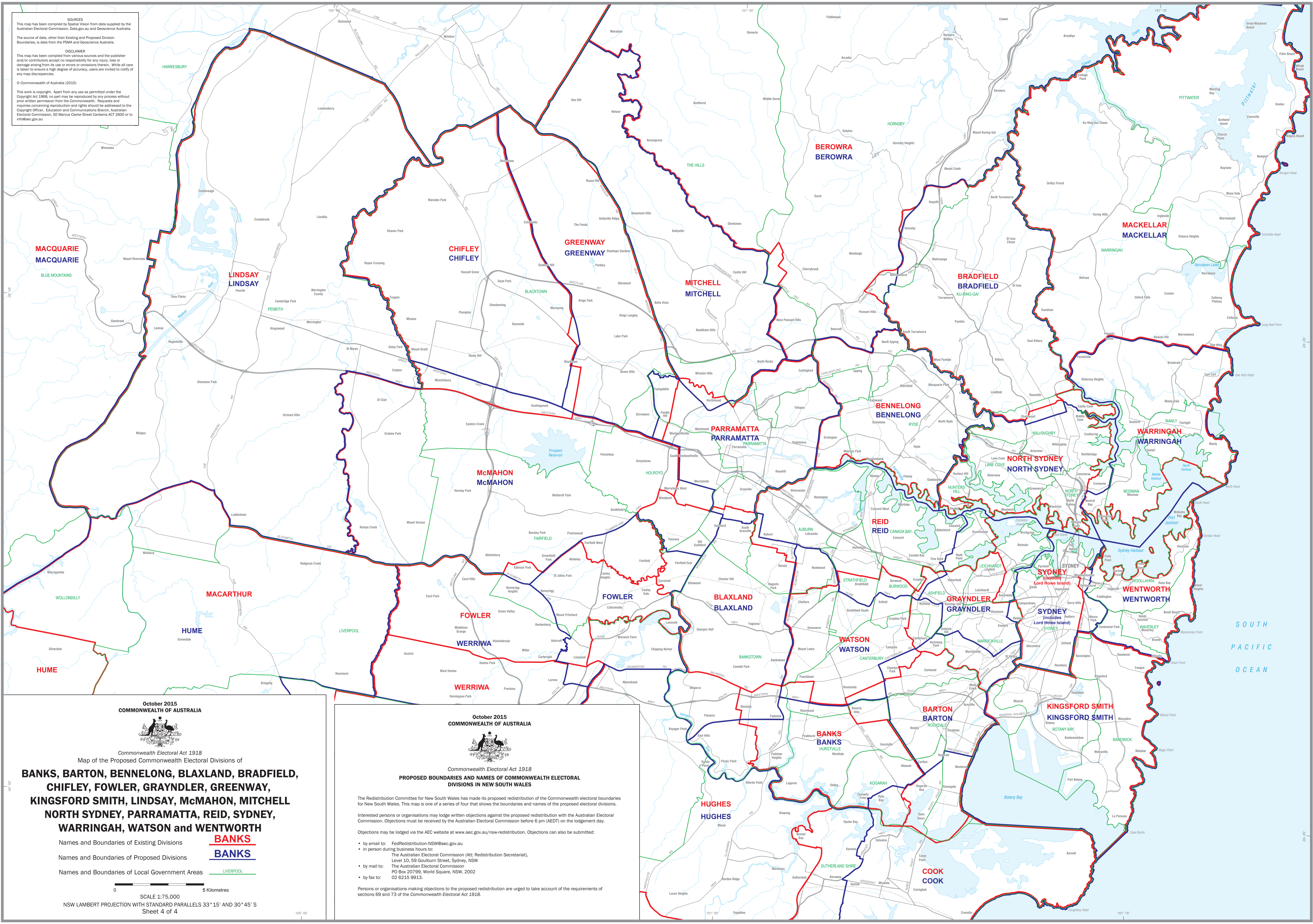


SOURCES
 This map has been compiled by Spatial Vision from data supplied by the Australian Electoral Commission, Data.gov.au and Geoscience Australia.
 The source of data, other than Existing and Proposed Division Boundaries, is data from the PSMA and Geoscience Australia.

DISCLAIMER
 This map has been compiled from various sources and the publisher and/or contributors accept no responsibility for any injury, loss or damage arising from its use or errors or omissions therein. While all care is taken to ensure a high degree of accuracy, users are invited to notify of any map discrepancies.

© Commonwealth of Australia (2015)
 This work is copyright. Apart from any use as permitted under the Copyright Act 1968, no part may be reproduced by any process without prior written permission from the Commonwealth. Requests and inquiries concerning reproduction and rights should be addressed to the Copyright Officer, Education and Communications Branch, Australian Electoral Commission, 50 Marcus Clarke Street Canberra ACT 2600 or to info@aec.gov.au



October 2015
 COMMONWEALTH OF AUSTRALIA



Commonwealth Electoral Act 1918

Map of the Proposed Commonwealth Electoral Divisions of
**BANKS, BARTON, BENNELONG, BLAXLAND, BRADFIELD,
 CHIFLEY, FOWLER, GRAYNDLER, GREENWAY,
 KINGSFORD SMITH, LINDSAY, McMAHON, MITCHELL
 NORTH SYDNEY, PARRAMATTA, REID, SYDNEY,
 WARRINGAH, WATSON and WENTWORTH**

Names and Boundaries of Existing Divisions
 Names and Boundaries of Proposed Divisions
 Names and Boundaries of Local Government Areas

BANKS
BANKS
 LIVERPOOL

0 5 Kilometres
 SCALE 1:75,000
 NSW LAMBERT PROJECTION WITH STANDARD PARALLELS 33° 15' AND 30° 45' S
 Sheet 4 of 4

October 2015
 COMMONWEALTH OF AUSTRALIA



Commonwealth Electoral Act 1918
 PROPOSED BOUNDARIES AND NAMES OF COMMONWEALTH ELECTORAL
 DIVISIONS IN NEW SOUTH WALES

The Redistribution Committee for New South Wales has made its proposed redistribution of the Commonwealth electoral boundaries for New South Wales. This map is one of a series of four that shows the boundaries and names of the proposed electoral divisions.

Interested persons or organisations may lodge written objections against the proposed redistribution with the Australian Electoral Commission. Objections must be received by the Australian Electoral Commission before 6 pm (AEDT) on the lodgement day.

Objections may be lodged via the AEC website at www.aec.gov.au/nsw-redistribution. Objections can also be submitted:

- by email to: FedRedistribution-NSW@aec.gov.au
- in person during business hours to:
 The Australian Electoral Commission (Att: Redistribution Secretariat),
 Level 10, 59 Goulburn Street, Sydney, NSW
- by mail to:
 The Australian Electoral Commission
 PO Box 20799, World Square, NSW, 2002
- by fax to:
 02 6215 9913.

Persons or organisations making objections to the proposed redistribution are urged to take account of the requirements of sections 69 and 73 of the Commonwealth Electoral Act 1918.