



The Federal Redistribution 2009
QUEENSLAND



Objection Number 451

Hon Alex Somlyay MP

8 pages

Canberra Office
PO Box 6022 Parliament House
Canberra ACT 2600
T: (02) 6277 4088 F: (02) 6277 8468

Electorate Office
Ground Floor, 17 Southern Drive
Maroochydore
PO Box 1978 Sunshine Plaza
Maroochydore QLD 4558
T: (07) 5479 2800 F: (07) 5443 5333
Email: alex.somlyay.mp@aph.gov.au



Hon ALEX SOMLYAY MP
Federal Member for Fairfax
Chief Opposition Whip



Received 19/8/09

97

M. Maxwell

Commissioner Ed Killesteyn
Electoral Commissioner
Australian Electoral Commission
GPO Box 2590
Brisbane Qld 4001

**RE: SUBMISSION TO THE AUSTRALIAN ELECTORAL COMMISSION (AEC)
COMMENTS ON PROPOSED REDISTRIBUTION OF FAIRFAX.**

Dear Commissioner Killesteyn,

Thank you for the comprehensive information you made available on 24 July.

I share the AEC's objective to unite communities of common interest. I am also mindful of the need to determine boundaries based on projected enrolment for July 2012. My submission aligns these objectives and requests consideration to changes between the Fairfax and Fisher boundaries. The AEC determined that Fairfax will have a projected enrolment of 96,354 and Fisher will have 95,108. My submission has a net outcome of being population neutral on those projections. The communities identified in this submission are all non-growth areas of the Sunshine Coast.

My central concern is the AEC's southern boundary to the seat of Fairfax fractures the small tightly knit semi-rural community of Palmwoods. The AEC indicated that the new southern boundary for the electorate of Fairfax will, in part, be along Palmwoods School Rd, Palmwoods (see Attachment A).

I would like to draw the committee's attention to the fact that this proposed boundary will have the unintended effect of excising residential subdivision known as Old Orchard from its community of Palmwoods. This subdivision is fully subscribed therefore there is no anticipated future growth for this subdivision. I have downloaded screen maps from *Whereis.com* (Attachment B) and the Australian Bureau of Statistics (Attachments C & D) to assist the AEC and clearly define the relationship of this area with the community of Palmwoods.

There are about 500 electors are enrolled in the Old Orchard subdivision.

This is a marginal adjustment of the overall enrolment for Fairfax, however it would have significant consequences for this small community. I suggest the southern boundary be changed to Rifle Range and Dart Roads (shown in Attachment B).

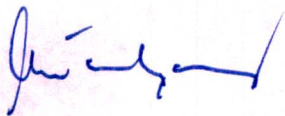
This enrolment adjustment can be offset by two small adjustments to Montville and Alexandra Headland.

The proposed boundary splits Montville. Montville should be completely in either Fairfax or Fisher. There are approximately 750 electors in Montville, also a matured community with little projected growth.

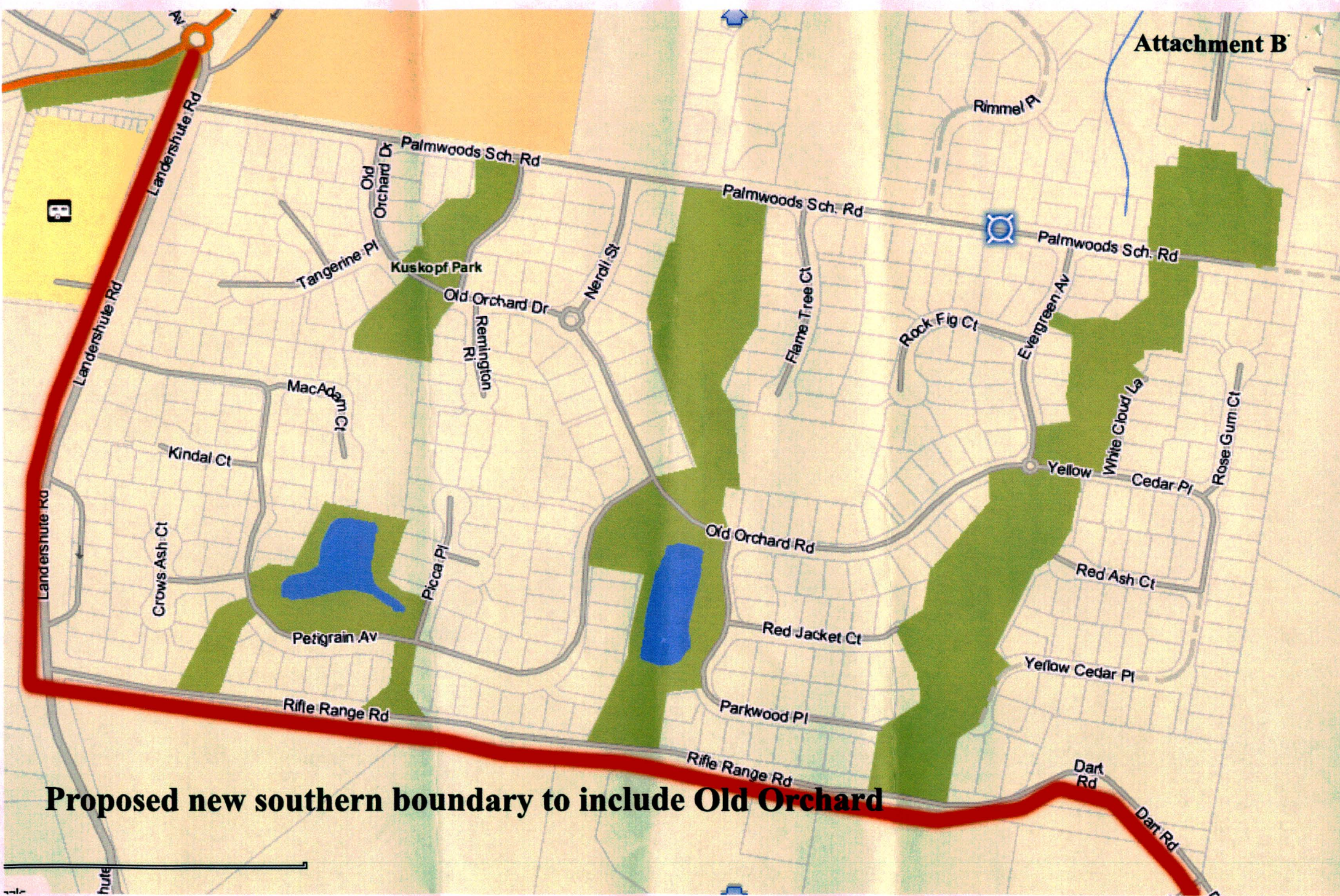
As the net effect of these suggested changes result in an approximate deficit of 200 electors, it is proposed that Alexandra Headlands is moved into Fairfax (Attachment E) and thereby maintain the overall balance of projected enrolments for both Fairfax and Fisher. It is proposed that the current boundary of Okinja Road be changed to the Buderim Mooloolaba Road, as shown in Attachment F.

In closing, I submit that it is vital to preserve the communities of Palmwoods and Montville and these peripheral adjustments remain aligned with AEC projections. I would be happy to provide your office with more information if required.

Yours sincerely,

A handwritten signature in blue ink, appearing to read 'Alex Somlyay', with a stylized flourish at the end.

ALEX SOMLYAY MP
Federal Member for Fairfax
Chief Opposition Whip



Proposed new southern boundary to include Old Orchard

2006 Census Community Profiles by Location

[? Census Help](#)

2006 Census Data

[by Location](#)
[by Topic](#)
[by Product Type](#)

2001 Census Data

[by Location](#)
[by Topic](#)
[by Product Type](#)

Census Help Links

[First visit to Census?](#)
[Which location do I select?](#)
[Census Help](#)

Current Selections: Palmwoods (Urban Centre/Locality) - Qld

Select a location using one of the following selection methods:

[Search](#)
[Address Search](#)
[States & Cities](#)
[Browse](#)
[Map](#)

- Search for a place name or postal area within Australia.
HINT: Enter at least three characters.

[? Location Search Tips](#)

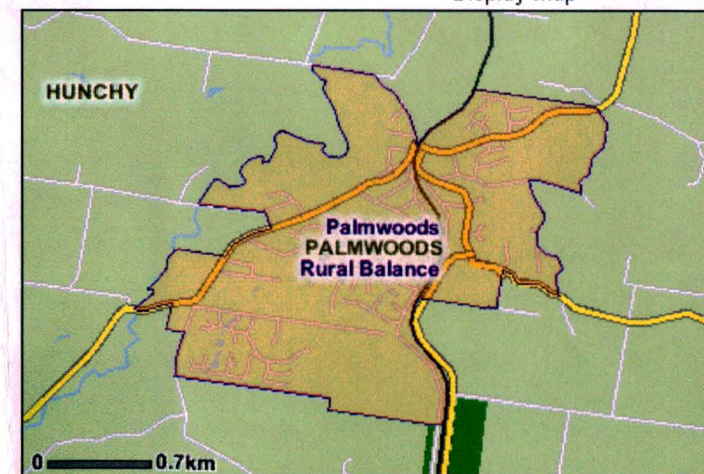
Your search has returned 2 results.

- Select a location and then click 'View Community Profiles'.

[i Which location do I select?](#)

Palmwoods (Maroochy Shire) (State Suburb) - Qld
Palmwoods (Urban Centre/Locality) - Qld

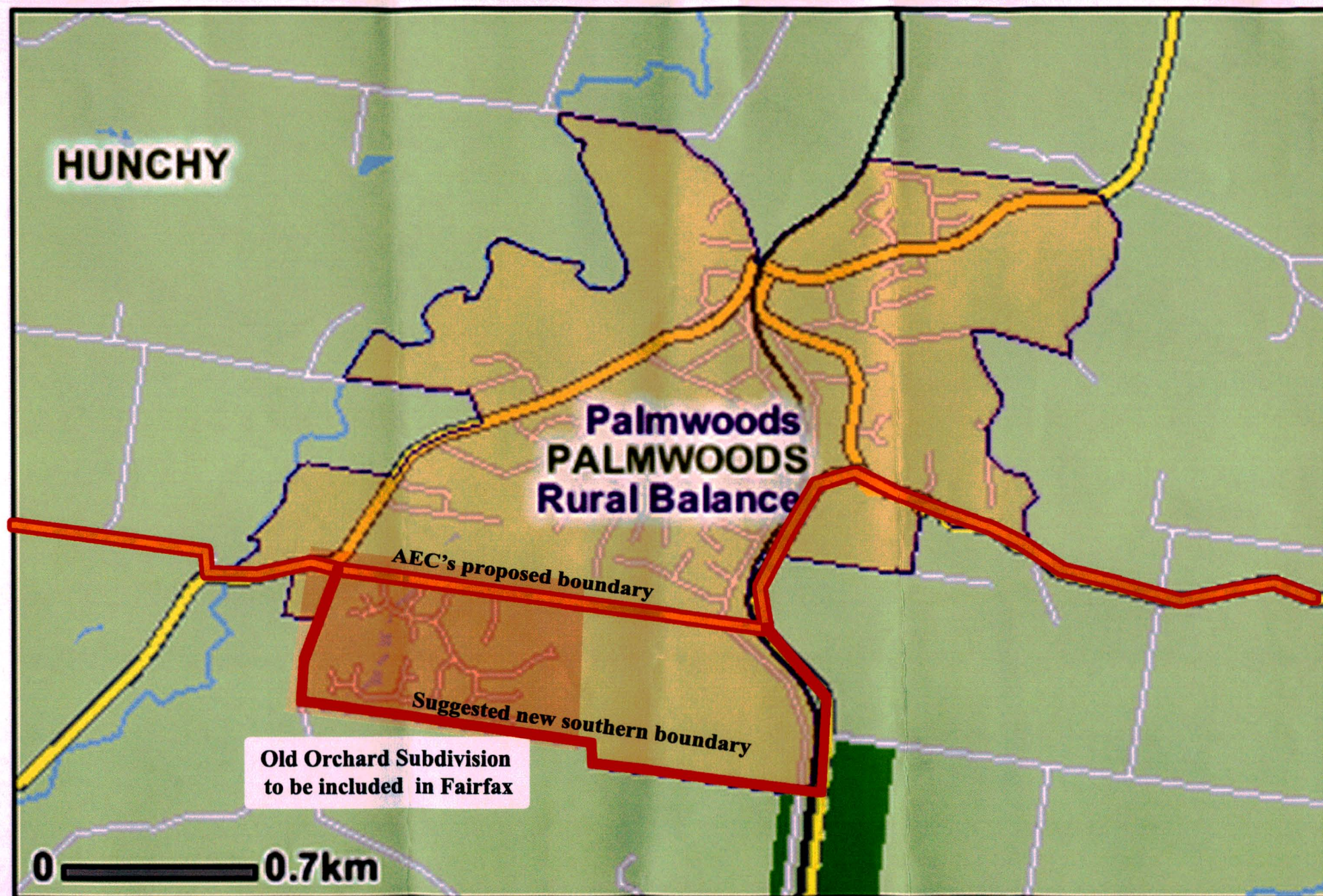
Map is not clickable

☒ Display map


© Commonwealth of Australia & [PSMA Australia](#) 2007

This page last updated 6 August 2009

 [Email notification service](#)



Attachment F

AEC proposed boundary

Alexandra Headland
4572

New southern boundary for Fairfax



Attachment A
(adapted from AEC published map)

Razorback
Road

HUNCHY

Maleny Montville
Road

ROAD

MONTVILLE

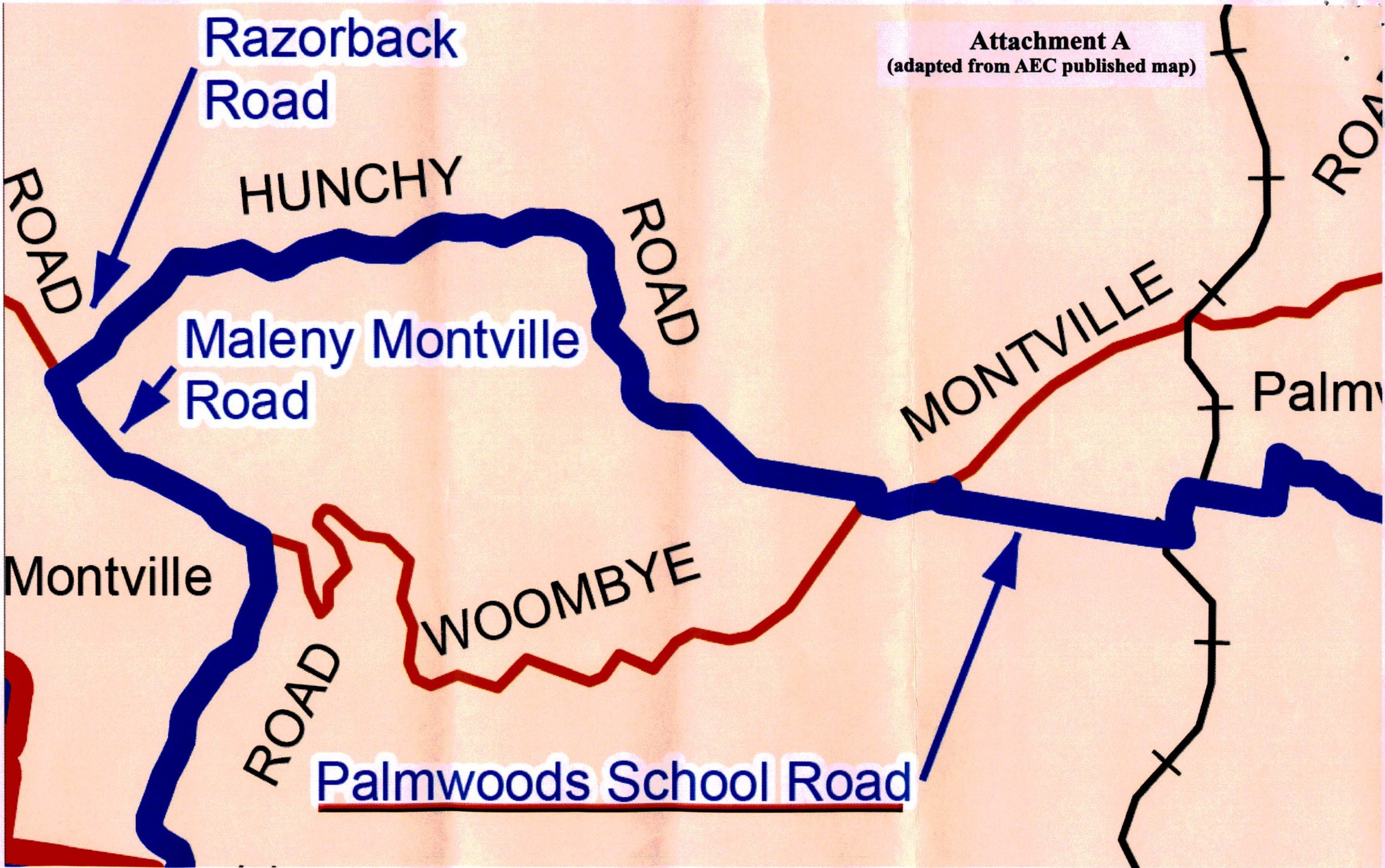
Palmv

Montville

WOOMBYE

ROAD

Palmwoods School Road



Attachment E
(adapted from AEC's map)

