



The Federal Redistribution 2003  
QUEENSLAND



---

**Public Objection Number 15**

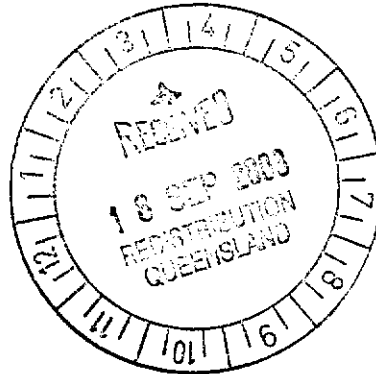
**Hon Alex Somlyay**

**5 pages**



# OBJECTION

## № - 15



Mr Bruce Goodwin  
Redistribution Secretariat  
Australian Electoral Officer for  
Queensland  
GPO Box 2590  
BRISBANE QLD 4001

Dear Mr Goodwin,

### 2003 PROPOSED REDISTRIBUTION OF QUEENSLAND INTO ELECTORAL DIVISIONS

I refer to your correspondence of 22 August 2003 regarding the proposed redistribution for Queensland and note your invitation to put forward written objections by 6pm Friday 19 September 2003.

I wish to make the following submission regarding my electorate of Fairfax.

At the southern end of the Fairfax electorate, the proposed boundary is not the optimal solution as the boundary divides the community of Maroochydhore.

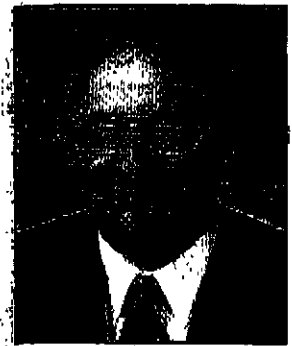
This proposal divides the Central Business District of Maroochydhore with the Sunshine Plaza Shopping Centre proposed to be in the seat of Fisher and the Big Top Shopping Centre proposed to be in the seat of Fairfax. This is not desirable and can be avoided.

The school community of Maroochydhore is also affected with the Maroochydhore High School proposed to be in the seat of Fairfax, and the Maroochydhore Primary School situated a few hundred metres away, proposed to be situated in Fisher.

The logical solution would be to use the Sunshine Motorway as a boundary, which would then include Buderim and Kuluin in the seat of Fairfax and leave the whole of Maroochydhore, Mooloolaba, Mountain Creek and Alexandra Headland in Fisher. The Australian Electoral Commission has previously recognised and used the Sunshine Motorway as a boundary between Fairfax and Fisher. The southern boundary of Fairfax should be the northern boundary of the suburb of Mountain Creek.

ACKNOWLEDGEMENT SENT

18, 09, 03



**HON. ALEX SOMLYAY**  
M.P.

*Member for Fairfax*  
Liberal

CHAIR

Standing Committee  
of Privileges

OTHER COMMITTEE  
MEMBERSHIPS

House Committee

STANDING

Economics, Finance and  
Public Administration

JOINT STATUTORY

Public Accounts and Audit

JOINT STANDING

Foreign Affairs, Defence  
and Trade

MEMBER

National Archives of Australia  
Advisory Council

ELECTORATE OFFICE

Suite 2

5-7 Birtwill Street  
COOLUM BEACH

PO Box 351  
COOLUM BEACH Qld 4573

Phone: (07) 5471 6611  
Fax: (07) 5471 6620  
Freecall No: 1300 301 971

Email:

Alex.somlyay.mp@aph.gov.au

CANBERRA OFFICE

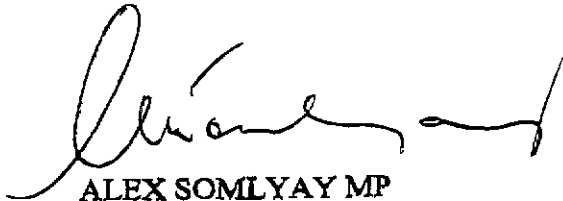
Parliament House  
CANBERRA ACT 2600  
Phone: (02) 6277 4727  
Fax: (02) 6277 8552

**2-15**

This way the Commission can avoid dividing Maroochydore in two and keep other communities together.

I enclose for your information, relevant maps outlining my suggestion.

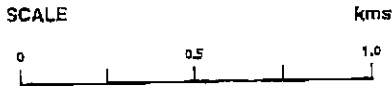
Yours sincerely



**ALEX SOMLYAY MP**  
**Member for Fairfax**

Ref: AS:lf

18 September 2003



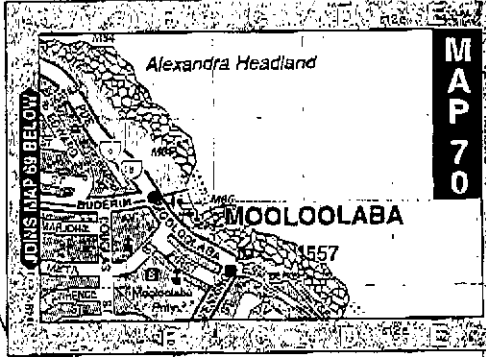
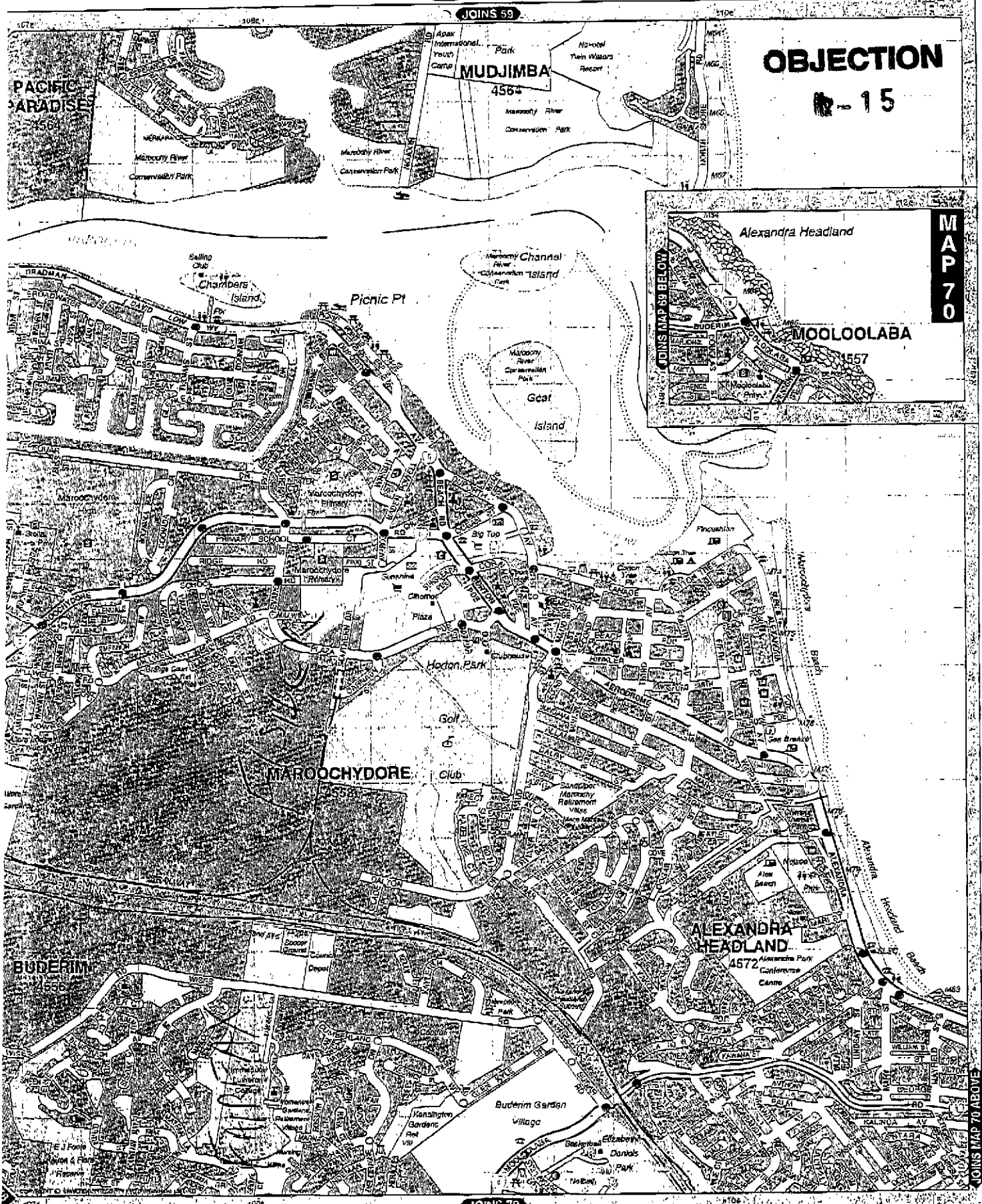
Maps shown in this directory are a partial extract from the UBD  
Queensland Country Link Street & Travel Directory



**AP 69**

**OBJECTION**

**15**



SEE OVER PAGE

15

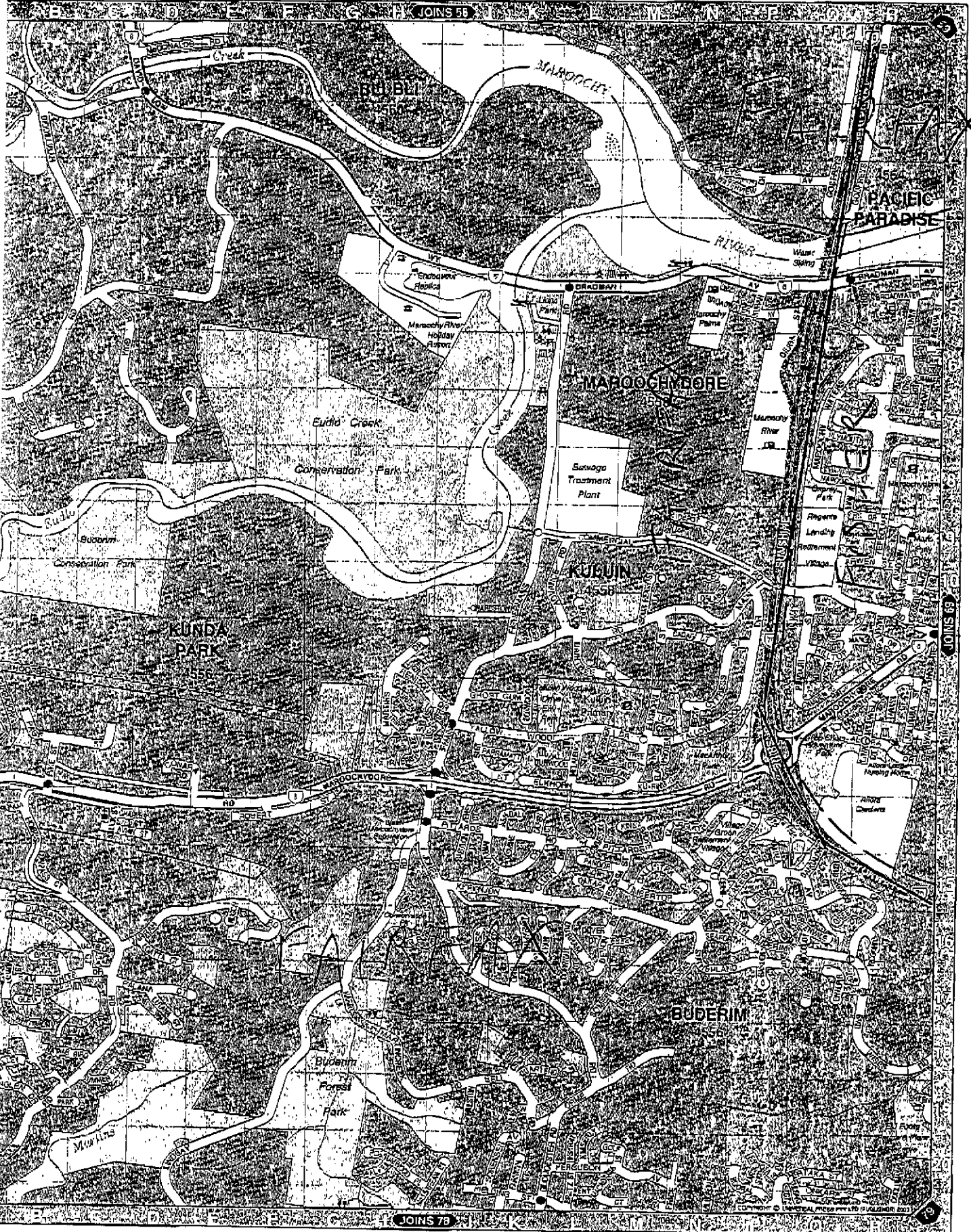
Yellow Pages



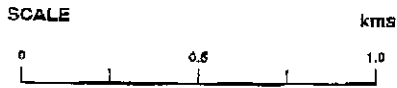
**MAP 68**

**Don't go the extra mile.**

printed from map © Tripla Geospatial Limited



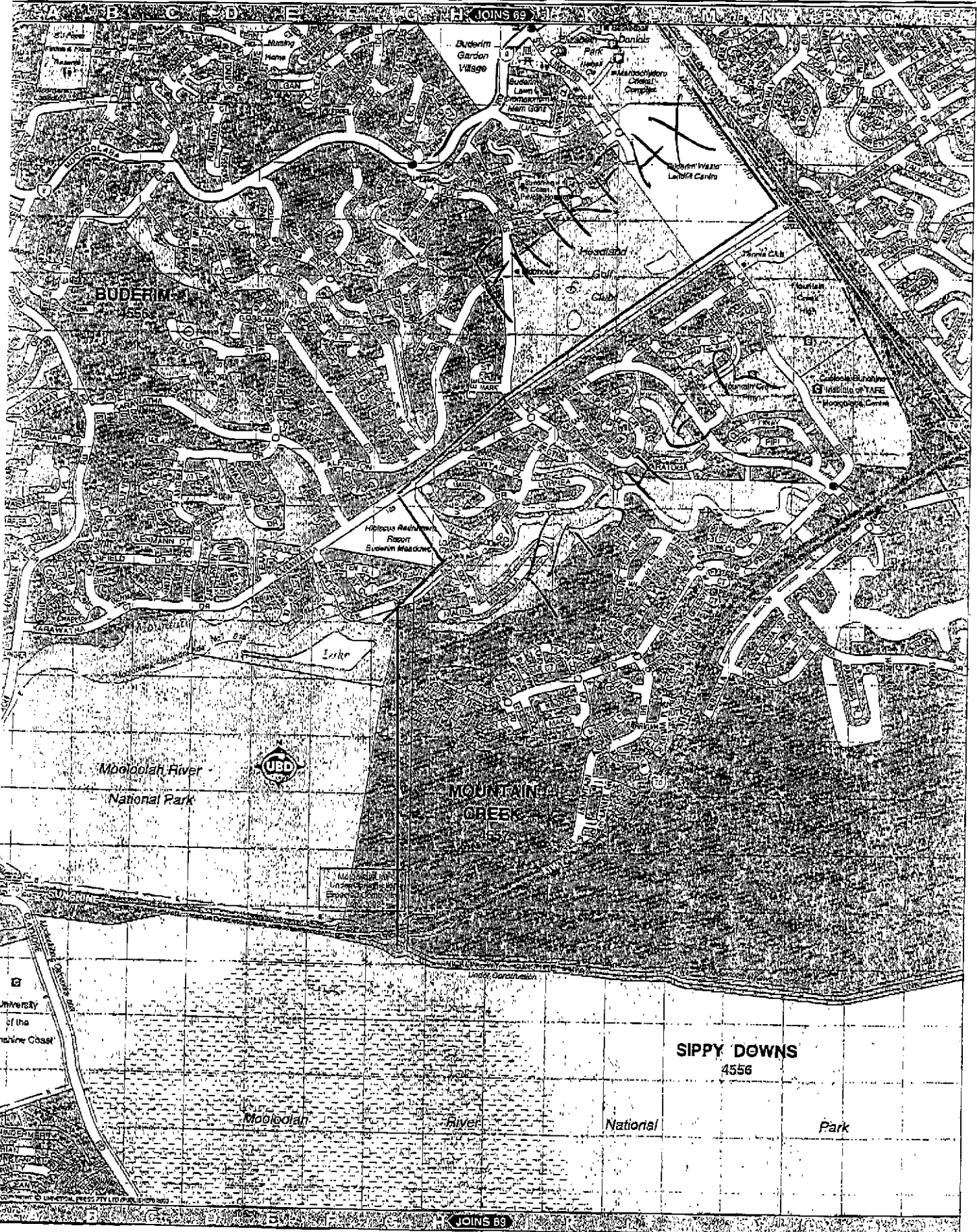
**15**



Maps shown in this directory are a partial extract from the UBD  
 Queensland Country Link Street & Travel Directory



**AP 79**



**SIPPY DOWNS**  
 4556

Mooloolah River National Park

JOINS 69