



The Federal Redistribution 2003
QUEENSLAND



Comment Number Eight on Public Suggestions

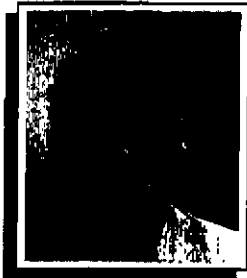
**Teresa Gambaro MP
Member for Petrie**

1 page



PARLIAMENT OF AUSTRALIA

HOUSE OF REPRESENTATIVES



TERESA GAMBARO MP
FEDERAL MEMBER FOR PETRIE

27 Redcliffe Parade
(PO Box 964)
Redcliffe Qld 4020
Tel: (07) 3283 4277
Fax: (07) 3284 1379

Email: T.Gambaro.MP@aph.gov.au
www.teresagambaro.net

Parliament House
Canberra ACT 2600
Tel: (02) 6277 4105
Fax: (02) 6277 8485

4 July 2003

Ms Anne Bright
Australian Electoral Commission
Facsimile: 3831 96 83



Dear Ms Bright

Re: Submission regarding the public suggestions invited into the Queensland Electoral Redistribution 2003

I note the public comments made by a number of submissions regarding the Division of Petrie in the current electoral redistribution.

I object to the submissions that argue for major changes to the boundaries of the Division of Petrie.

I believe it is important that the Division of Petrie maintains its communities of interest such as the City of Redcliffe and Brisbane's outer northern suburbs and its existing communication links.

It is also important that the Division of Petrie maintains much of the historical dimension of this division.

I endorse the suggestions regarding the Division of Petrie as lodged by the Liberal Party of Australia (Queensland Division).

TERESA GAMBARO MP
Federal Member for Petrie

RECEIVED 4/7/03