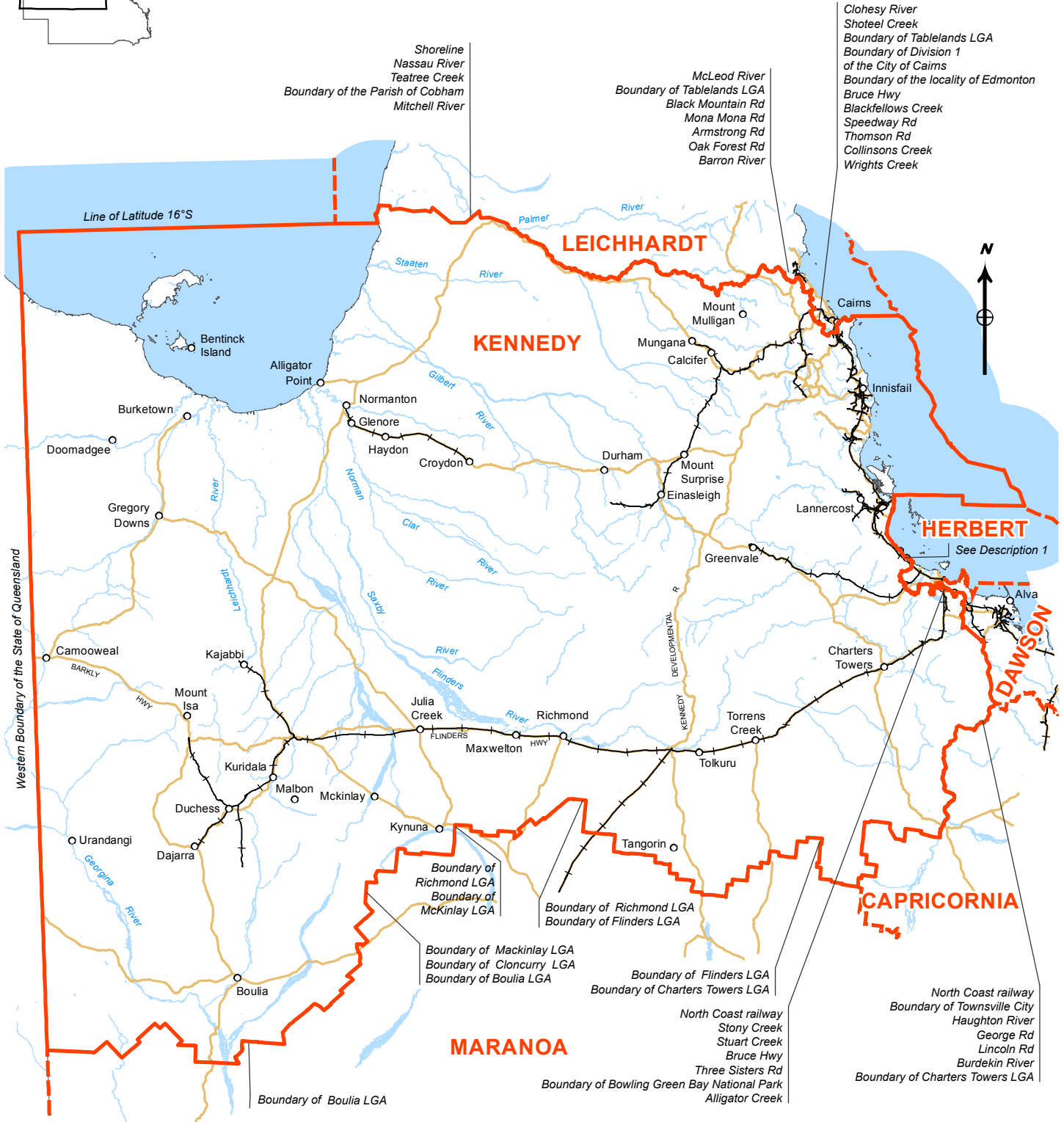


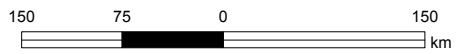
Commonwealth Electoral Division of

KENNEDY

Boundary gazetted 15 December 2009



This map has been compiled by Terranean Mapping Technologies from data supplied by the Australian Electoral Commission, and Pitney Bowes Business Insight 2009, under licence from PSMA Australia Ltd. © Pitney Bowes Software Pty Ltd, 2009. © Commonwealth of Australia 2010



- Divisional boundary
- Adjoining boundary
- Size of division 568 993 km²

Note:
Local Government Area descriptions are current 2006.
Federal electoral boundaries follow the centre of features unless otherwise advised.

Description 1: Commencing at the mouth of Trinity Inlet, follow the shoreline to Cape Grafton and then via the Outer Limit of the Great Barrier Reef. Follow it southerly to the Boundary of Hinchinbrook LGA, the seashore, Sleeper Log Creek and the Boundary of Charters Towers LGA. By that boundary, the Alice River, the Boundary of the locality of Alice River and the junction of Little Bohle River and the Bohle River. Follow the Bohle River to Round Mountain Rd, Kelso Dr, to the Ross River. North along Ross River to the locality boundary of Mount Stuart to the boundary of the locality of Roseneath on Mt Stuart Rd.

