

2010  
COMMONWEALTH OF AUSTRALIA

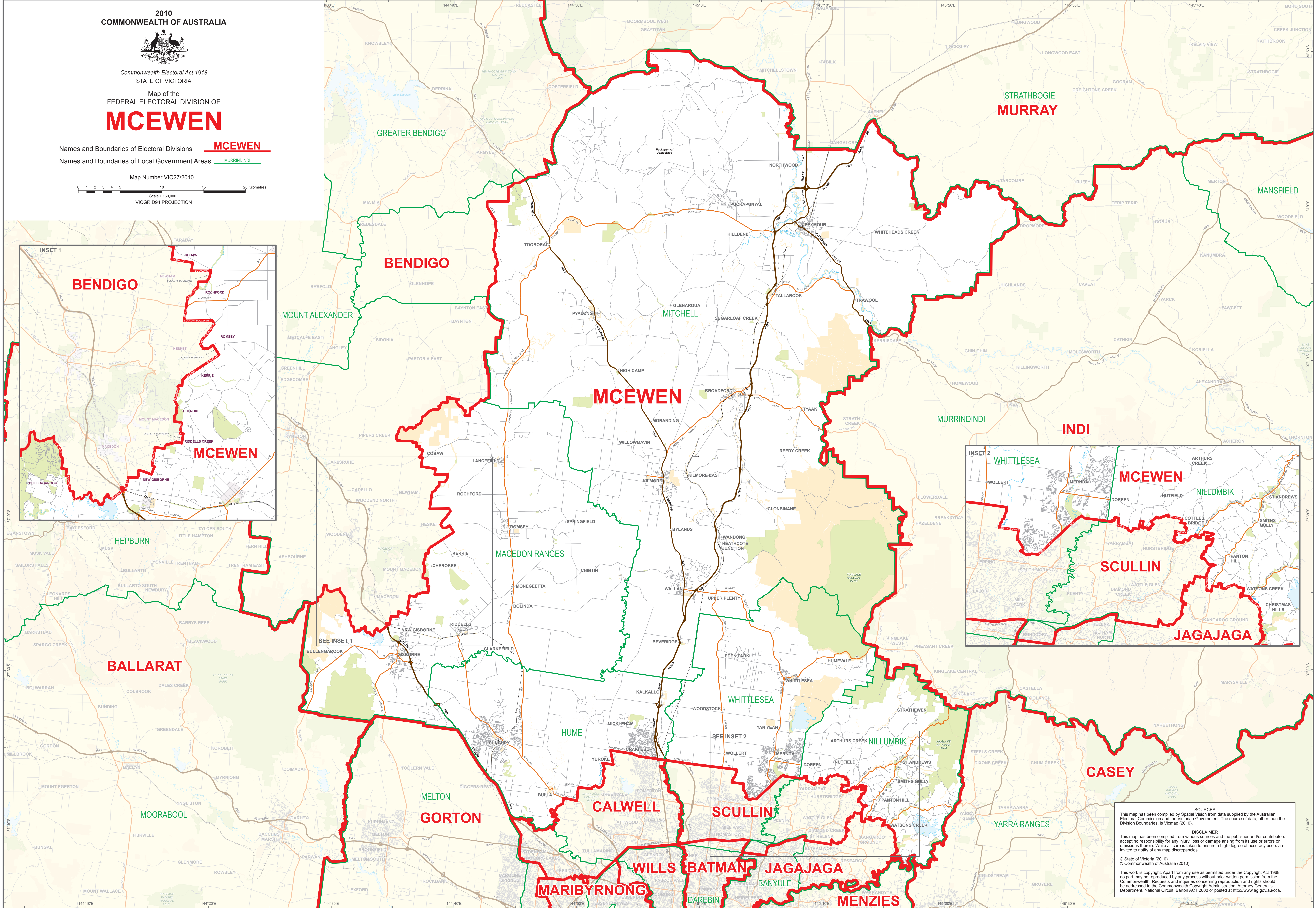
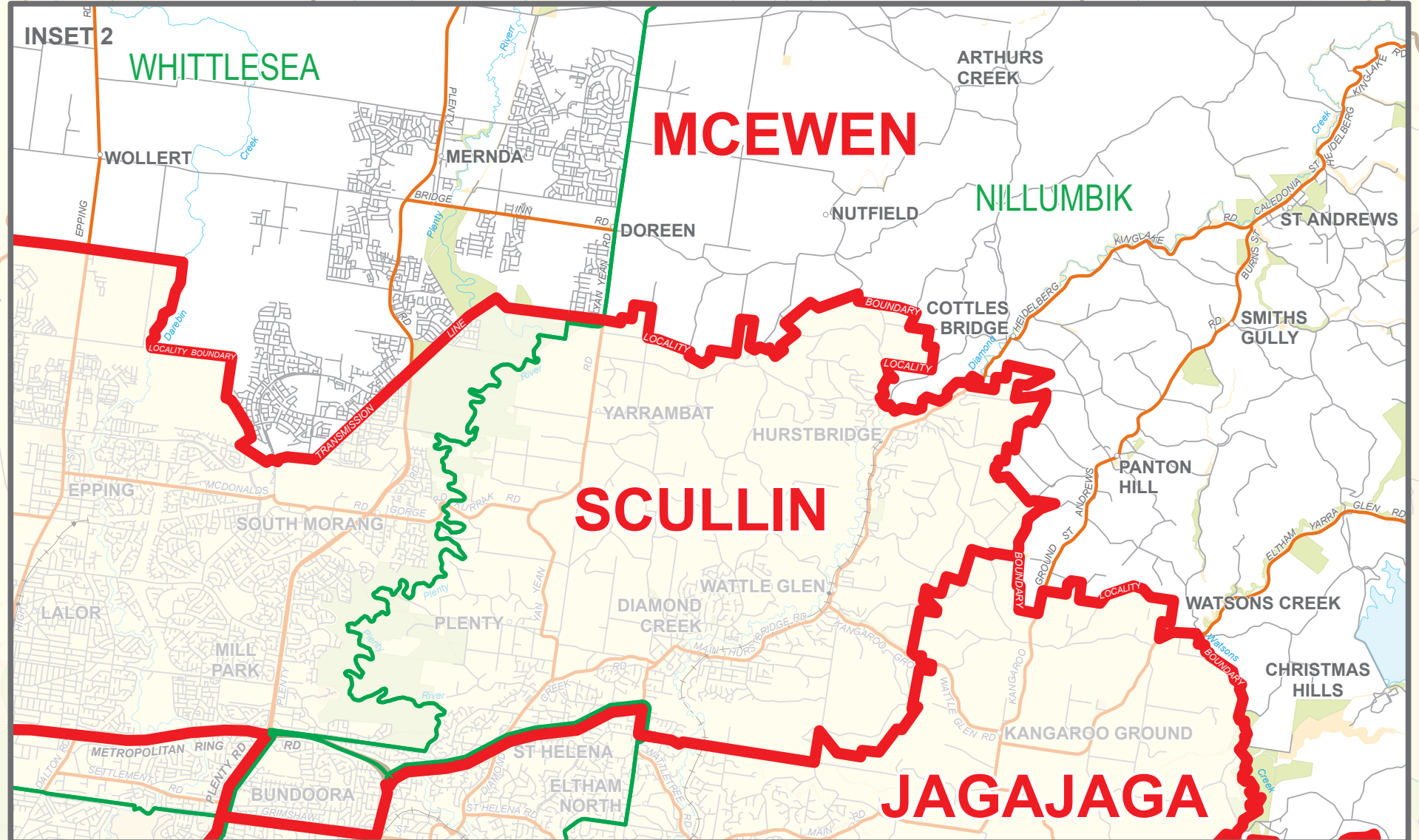
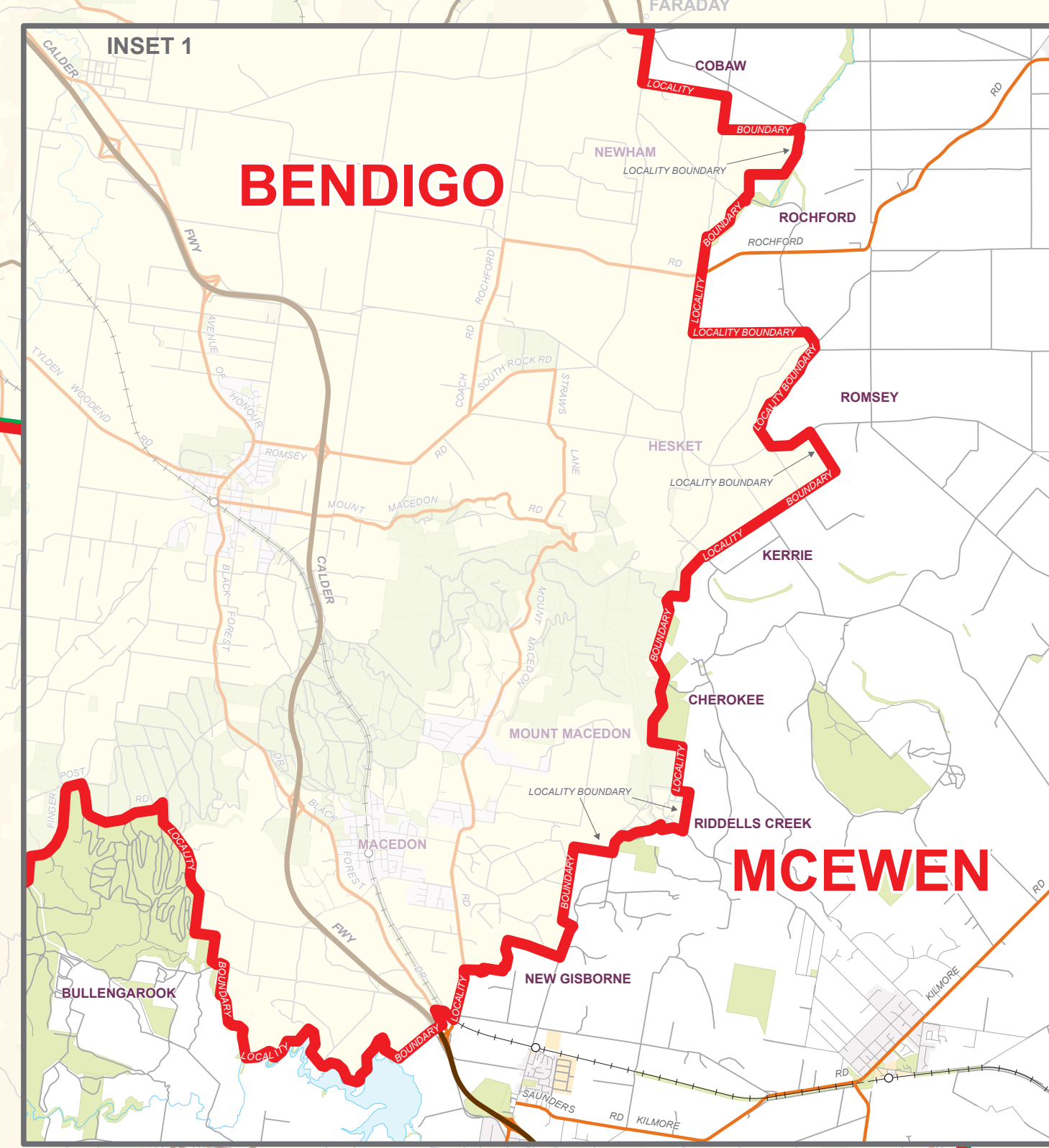
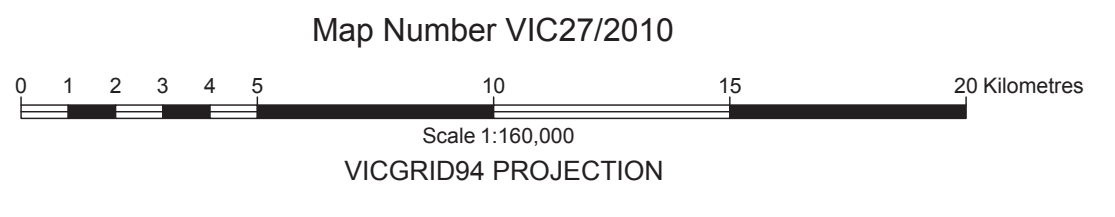


Commonwealth Electoral Act 1918  
STATE OF VICTORIA

Map of the  
FEDERAL ELECTORAL DIVISION OF

# MCEWEN

Names and Boundaries of Electoral Divisions **MCEWEN**  
Names and Boundaries of Local Government Areas **MURRINDINDI**



**SOURCES**  
This map has been compiled by Spatial Vision from data supplied by the Australian Electoral Commission and the Victorian Government. The source of data, other than the Division Boundaries, is Vicmap (2010).

**DISCLAIMER**  
This map has been compiled from various sources and the publisher and/or contributors accept no responsibility for any injury, loss or damage arising from its use or errors or omissions therein. While all care is taken to ensure a high degree of accuracy users are invited to notify of any map discrepancies.

© State of Victoria (2010)  
© Commonwealth of Australia (2010)

This work is copyright. Apart from any use as permitted under the Copyright Act 1968, no part may be reproduced by any process without prior written permission from the Commonwealth. Requests and inquiries concerning reproduction and rights should be addressed to the Commonwealth Copyright Administration, Attorney General's Department, National Circuit, Barton ACT 2600 or posted at <http://www.ag.gov.au/cca>.