



The Federal Redistribution 2010
Victoria



Public Suggestion Number 7

Luke O'Sullivan, State Director, The Nationals for Regional Victoria

15 pages

From: Luke O'Sullivan [luke.osullivan@nationals.org.au]
Sent: Thursday, 8 April 2010 10:13 PM
To: VIC Redistribution
Subject: Redistribution Submission
Attachments: Redistribution Submission.pdf

Please find attached The Nationals submission for the redistribution.

Luke O'Sullivan
State Director
THE NATIONALS *for Regional Victoria*
Level 10, 140 Bourke St, Melbourne 3000
ph 03 9654 6588 fax 03 9650 2525 mob 0418 335 713
luke.osullivan@nationals.org.au www.vic.nationals.org.au

SUBMISSION TO THE AUSTRALIAN ELECTORAL COMMISSION ON THE REDISTRIBUTION OF SEATS IN VICTORIA

APRIL 2010

The Nationals Victoria welcome the opportunity to put forward a suggestion for consideration in determining Divisional boundaries for Victoria.

The history, record and objectives of The Nationals stretching back over the 90 years since the Party (then the Country Party) was first represented in the Federal Parliament in 1920 emphasises the maintaining of an undiluted voice for rural and regional electors in the House of Representatives. The Party has always advocated the construction of Divisions based on community of interest, commonality, ease and means of communication and travel and the avoidance of contrived boundaries.

This redistribution, retaining as it does 37 Divisions, should be capable of being executed with minimum disruption to current boundaries, especially beyond the Melbourne metropolitan region. It is acknowledged that some change is inevitable to meet enrolment quota requirements but there seems no reason why existing rural and regional Divisions should be subject to radical redrawing. Rural and regional communities tend to be more cohesive than those in the suburbs and major boundary changes would be perceived as disruptive and unnecessary.

Clearly, the peri-urban expansion around the north and west of Melbourne, combined with the number of significantly below quota Divisions in the middle ring of suburbs, will necessitate some major reconfiguration. The Nationals believe that those changes should not be at the expense of maintaining truly rural and regional Divisions. It would not be in the community's interests to have Divisions radiating out from Melbourne comprising a solid urban enrolment at the southern extremity with the balance made up of more sparsely populated agricultural communities.

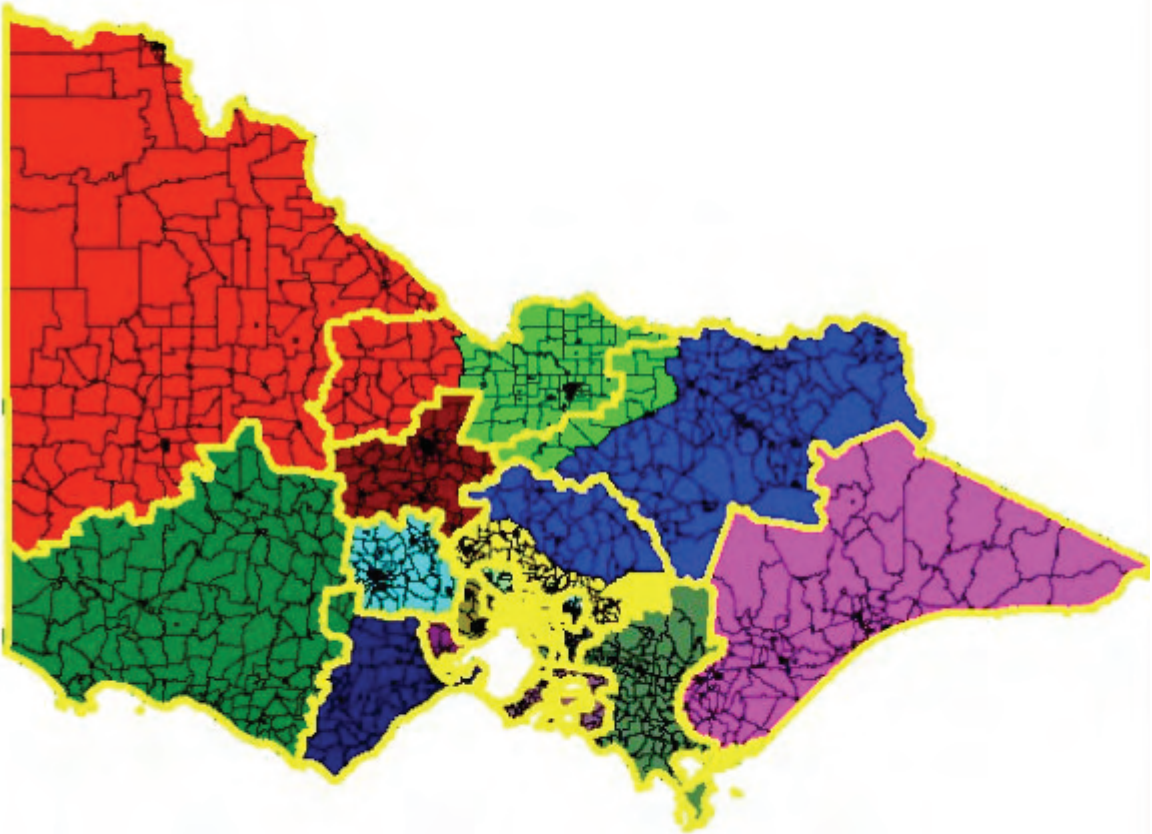
The Nationals suggestions contained in this submission demonstrate how a redivision can occur within the above parameters and at the same time, adhere to the requirements set out in the Commonwealth Electoral Act 1918.

In accordance with the Act and adhering to the parameters set by the Australian Electoral Commission, The Nationals submission sets out Divisions that comply with the minimum elector quota of 97,680 and a maximum of 104,764 in 17 June 2014.

As The Nationals are a party solely dedicated to regional areas, the submission will not go into detail on the makeup of the Divisions in metropolitan Melbourne. The submission however, will provide a scenario which enables the number of Divisions in Melbourne to fit within the maximum and minimum quotas of the electors in those Divisions. The Division boundaries could be drawn in any number of variations and The Nationals believe that the commission is better placed to determine the actual lines on the map for these areas.

The changes suggested in The Nationals submission are visually detailed on a macro scale as follow.

Proposed state wide map

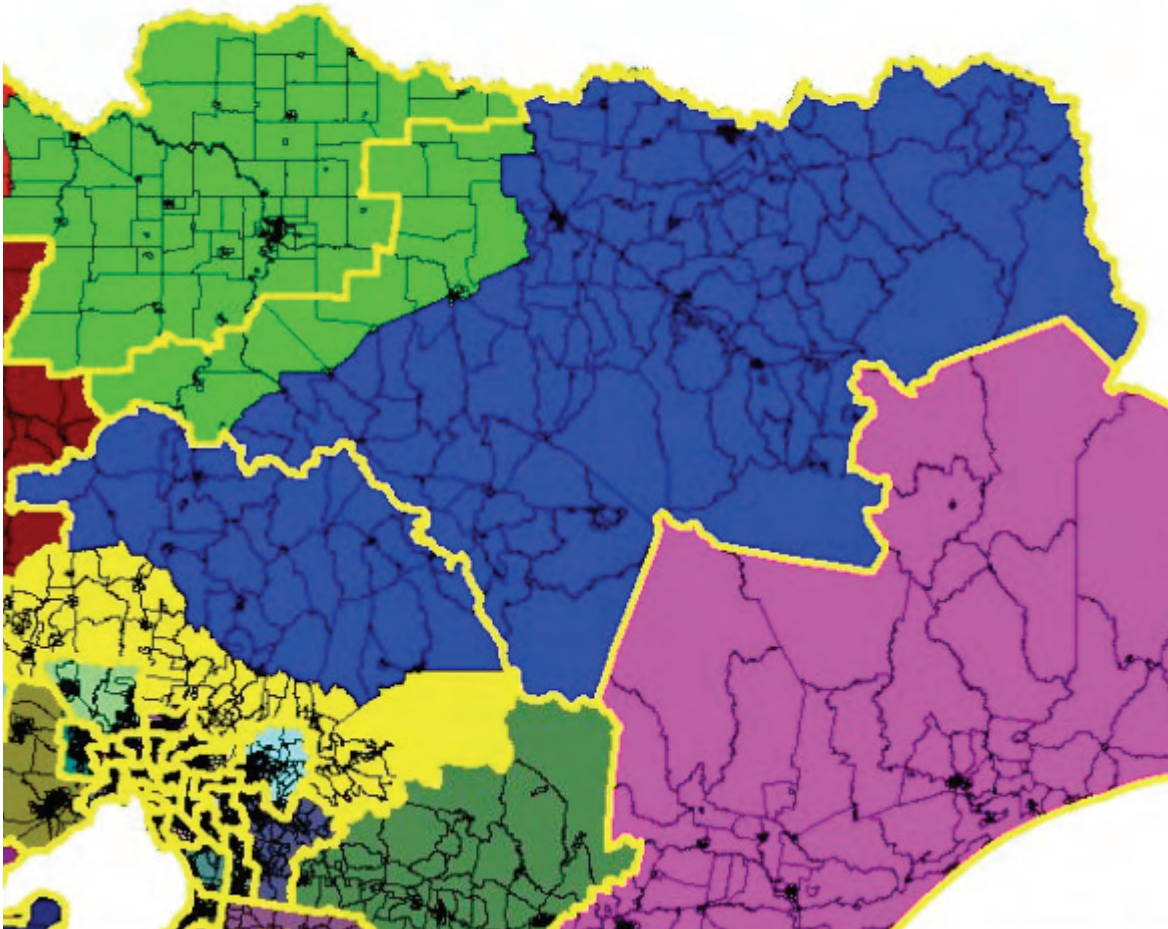


INDI

Indi would take from the old Division of McEwen the Local Government Area (LGA) of Murrindindi Shire and part of the Mitchell Shire in the north including Seymour, Tooborac and Broadford.

From former Division McEwen	Current Population	Projected Population
Murrindindi Shire (all)	9,963	10,312
Mitchell Shire (part) The CCDs included are:		
2050602		
2050604		
2050606		
2050607		
2050611		
2051201		
2051202		
2051203		
2051204		
2051205		
2051206		
2051207		
2051208		
2051301		
2051302		
2051303		
2051304		
2051305		
2051306		
2051307		
2051308		
2051309		
2051401		
2051403		
2051404		
2051405		
2051406		
2051407		
2051408		
	10,400	10,592
TOTAL	20,363	20,904
Result	Current Population	Projected Population
McEwen	90,378	101,925
Indi	111,531	116,290

Map of proposed Indi



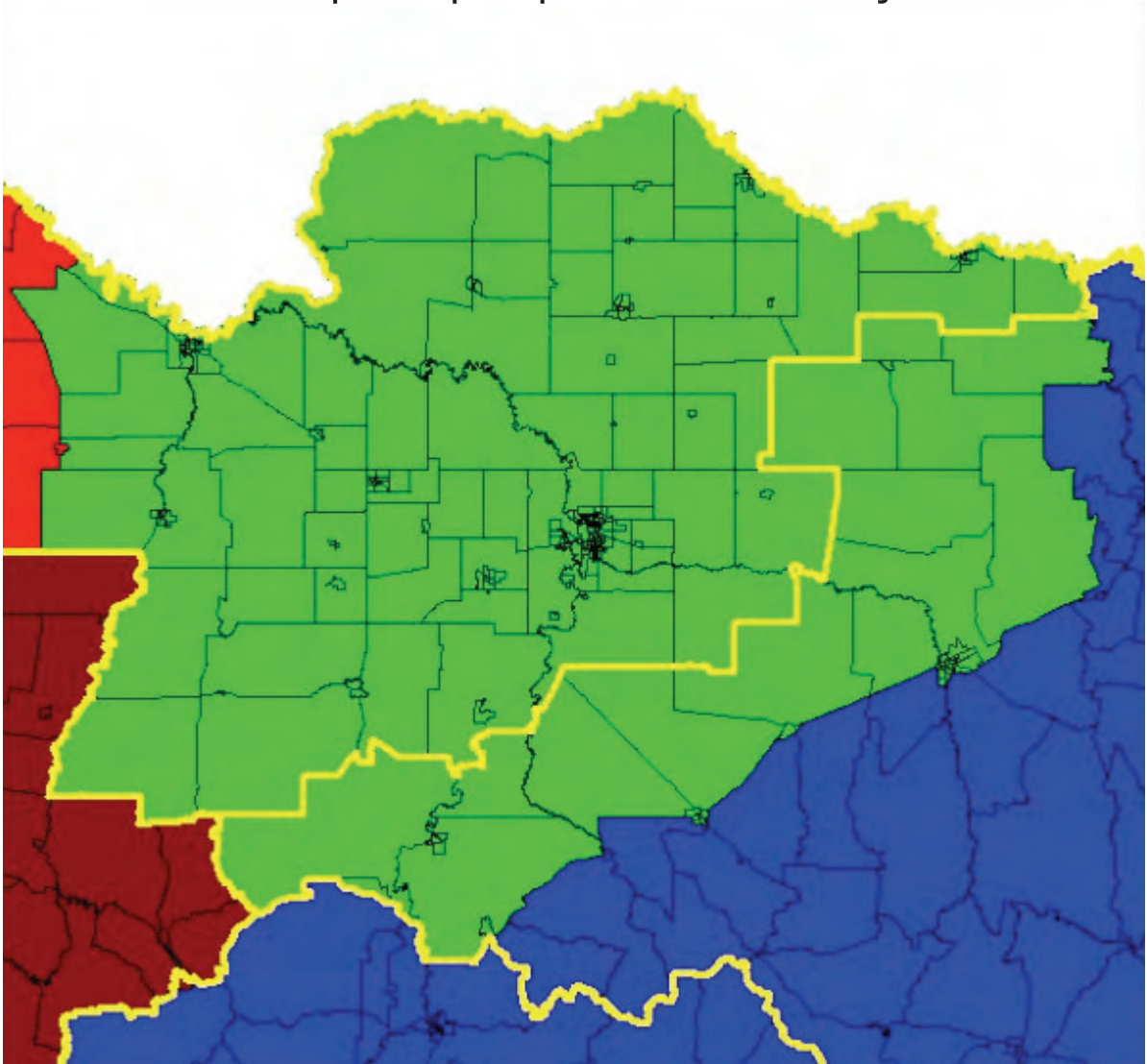
The community of interest remains intact with the Hume Highway being the joining link from the south of Indi to the northern end at Wodonga. Residents of Indi utilise the Hume Freeway when travelling north towards New South Wales or south to Melbourne.

MURRAY

Murray would take from the old Division of Indi the LGA of Moira Shire, Rural city of Benalla and the Strathbogie Shire. This will place the townships of Nagambie, Euroa and Benalla into the Division of Murray.

From the former Division of Indi	Current Population	Projected Population
Moira Shire (part)		
The CCDs included are:		
2030203		
2030204		
2030205		
2030206		
2030209		
	844	839
RC Benalla (part)		
The CCDs included are:		
2050401		
2050402		
2050403		
2050405		
2050410		
2050412		
2050413		
2050414		
2050501		
2050502		
2050503		
2050504		
2050505		
2050506		
2050507		
2050508		
2050509		
2050510		
2050511		
2050512		
2050513		
	8,280	8,397
Strathbogie Shire (part)		
2050101		
2050102		
2050103		
2050104		
2050106		
2050108		
2050109		
2050201		
2050202		
2050204		
2050205		
2050301		
2050302		
2050304		
2050306		
2050307		
	5,081	6,038
TOTAL	14,205	15,274
Result	Current Population	Projected Population
Indi	97,326	101,016
Murray	102,983	107,676

Map of proposed Murray



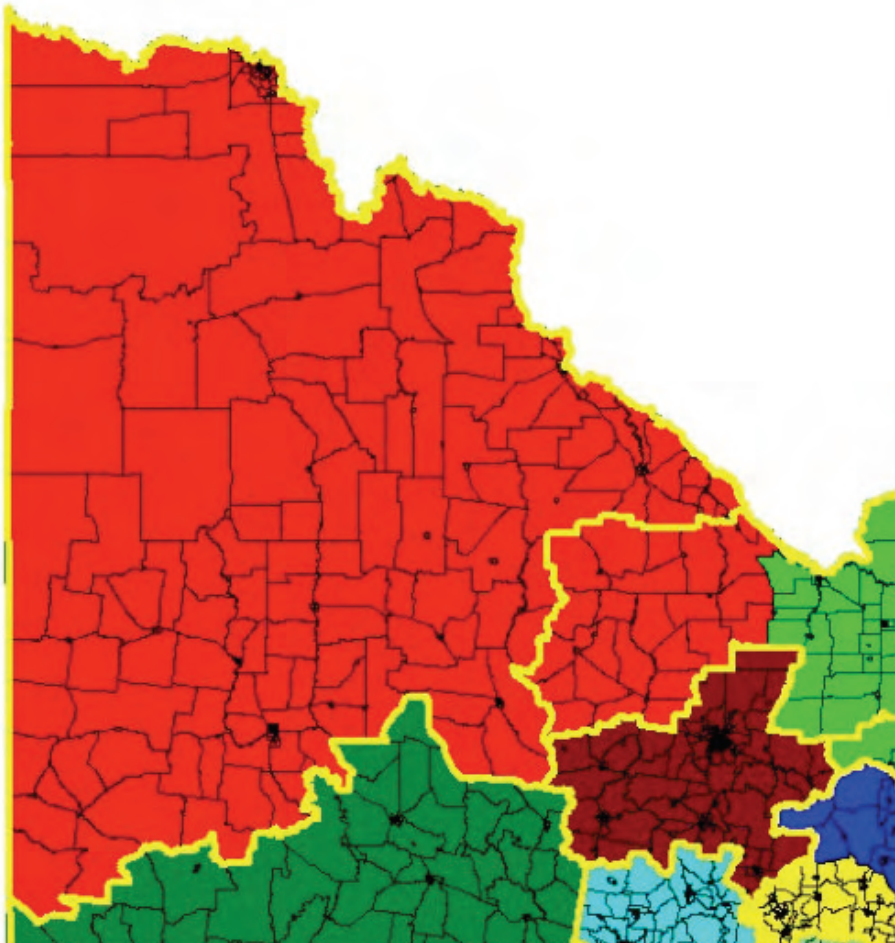
Shepparton will become the geographical centre of Murray. Nagambie has a community of interest with Shepparton being both located on the Goulburn Valley Highway. The townships of Euroa and Benalla will now be in Murray as both towns are bypassed by the Hume Highway.

MALLEE

Mallee would take from the old Division of Murray the LGAs of Loddon Shire (all except far south which remains in Division of Bendigo) and six CCDs in rural west of Campaspe Shire.

From the former Division of Murray	Current Population	Projected Population
Loddon Shire (all)	5,035	4,895
Campaspe Shire (part)		
The CCDs included are:		
2020601		
2020602		
2020603		
2020604		
2020606		
2020607		
	1,316	1,342
TOTAL	6,351	6,237
Result	Current Population	Projected Population
Murray	96,632	101,439
Mallee	95,367	97,958

Map of proposed Mallee



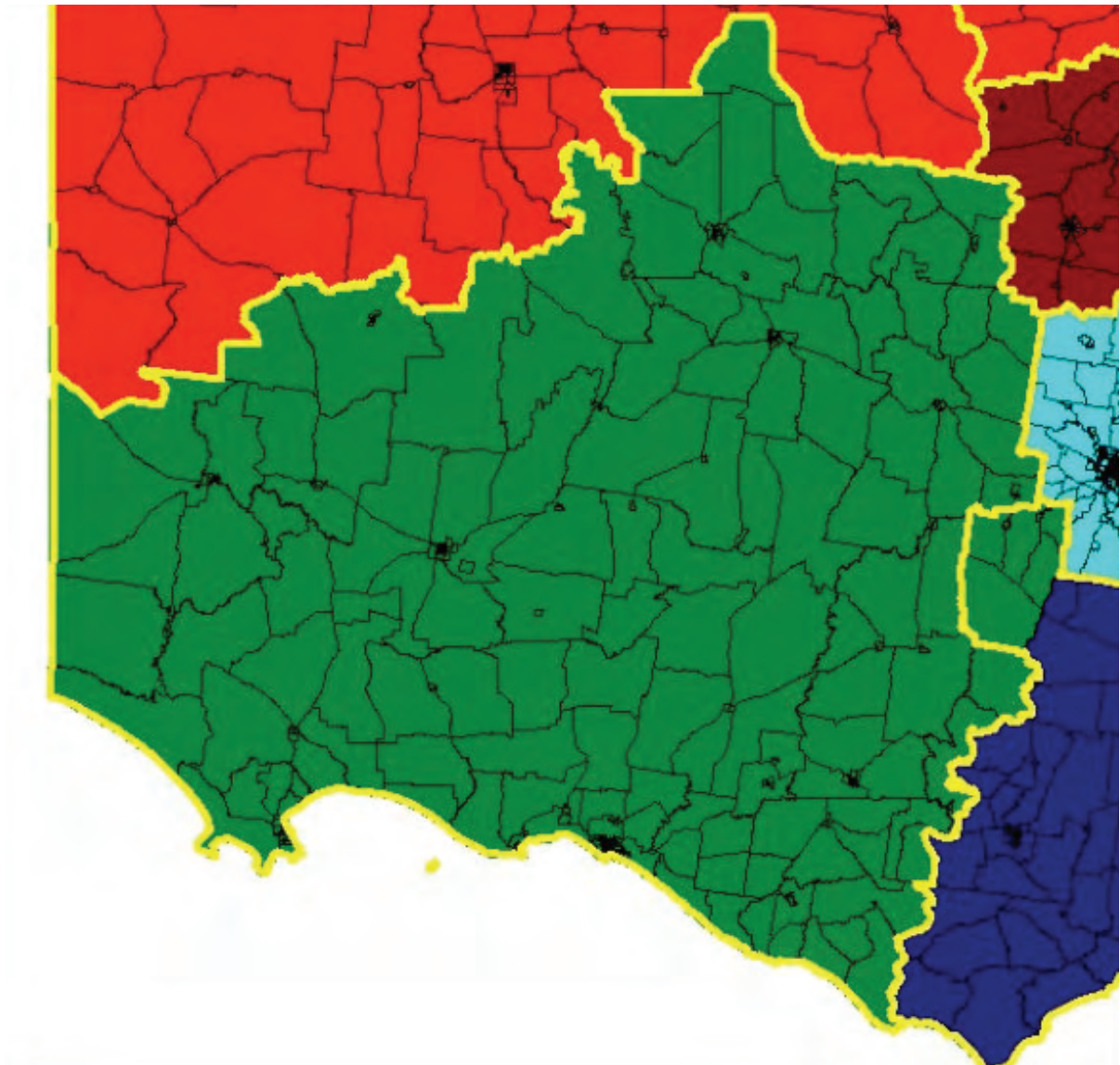
The primary production in the Loddon Shire is consistent to existing semi dry land farming in existing Mallee. Gunbower and Lockington go into Mallee. These areas again have a consistent primary production equivalent to Mallee.

WANNON

Wannon would take from the old Corangamite the LGA of Golden Plains Shire (part). This would see the towns of Linton, Smythesdale and Scarsdale in Wannon.

From the former Division of Corangamite	Current Population	Projected Population
Golden Plains Shire (Part)		
The CCDs included are:		
2100804		
2100808		
2101901		
2101902		
2101903		
2101905		
2101906		
2101907		
	1,710	1,729
TOTAL	1,710	1,729
Result	Current Population	Projected Population
Corangamite	96,638	104,303
Wannon	92,817	98,060

Map of proposed Wannan



CORANGAMITE

Corangamite would reduce numbers by transferring electors from the LGA of Golden Plains (part). This would see the towns of Linton, Smythesdale and Scarsdale transfer into Wannon.

From the former Division of Corangamite	Current Population	Projected Population
Golden Plains Shire (Part)		
The CCD boundaries are explained in the above explanation in Wannon for the Golden Plains Shire.	1,710	1,729
TOTAL	1,710	1,729
Result	Current Population	Projected Population
Corangamite	96,638	104,303
Wannon	92,817	98,060

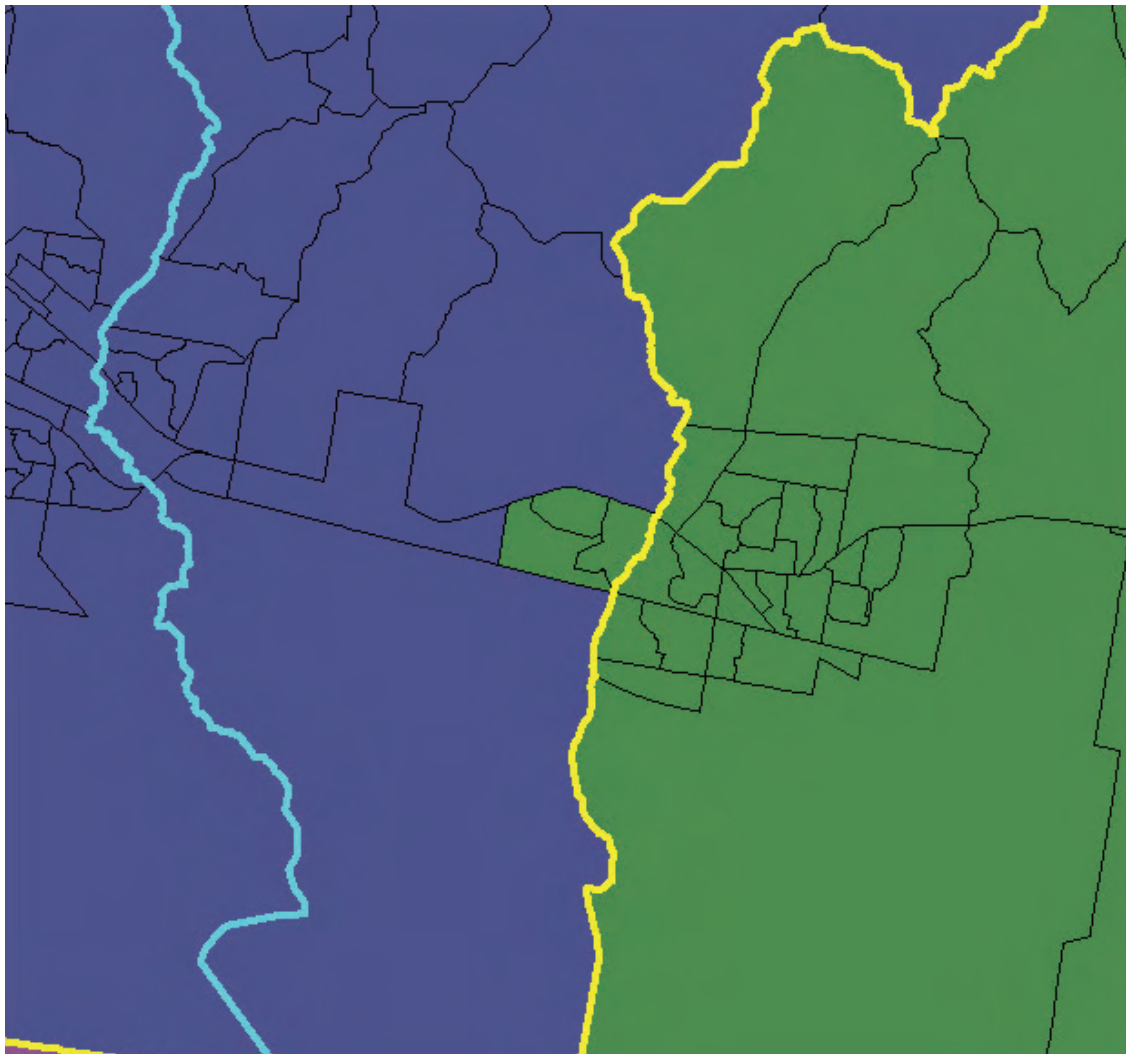
McMILLAN

McMillan would gain from the old Division of La Trobe, three CCDs just west of Pakenham to make fit within the minimum and maximum quotas in June 2014.

From the former Division of La Trobe	Current Population	Projected Population
Cardinia Shire (part)		
The CCDs included are:		
2341318		
2341319		
2341320		
	2,512	4,249
TOTAL	2,512	4,249
Result	Current Population	Projected Population
La Trobe	92,446	101,513
McMillan	92,429	101,562

Map of proposed McMillan

(Western end of Electorate)



BALLARAT

No change to current boundaries as the maximum and minimum quotas are met in the projection figures as at June 2014.

BENDIGO

No change to current boundaries as the maximum and minimum quotas are met in the projection figures as at June 2014.

GIPPSLAND

No change to current boundaries as the maximum and minimum quotas are met in the projection figures as at June 2014.

METROPOLITAN AREAS

The remaining seats all fit within the wider metropolitan Melbourne and Geelong areas. These seats are not defined in The Nationals submission. However calculations have been undertaken and the number of metropolitan seats with electors that are either under quota are offset by the number of seats with electors that are over quota.

Division name	Number of electors	Percentage Variance from Quota	Changes Needed
MARIBYRNONG	88,363	-12.70	9,317
DEAKIN	90,731	-10.36	6,949
CHISHOLM	91,635	-9.47	6,045
BRUCE	91,795	-9.31	5,885
KOOYONG	92,087	-9.02	5,593
MENZIES	92,932	-8.19	4,748
HOTHAM	93,256	-7.87	4,424
BATMAN	93,702	-7.43	3,978
SCULLIN	94,598	-6.54	3,082
CORIO	95,139	-6.01	2,541
HIGGINS	95,284	-5.87	2,396
CASEY	95,903	-5.25	1,777
JAGAJAGA	96,909	-4.26	771
GOLDSTEIN	97,749	-3.43	None
DUNKLEY	97,784	-3.40	None
ASTON	98,260	-2.93	None
GELLIBRAND	102,248	1.01	None
WILLS	102,337	1.10	None
FLINDERS	102,669	1.43	None
LA TROBE*	101,513	0.29	None
CORANGAMITE	106,032	4.75	-1,268
MELBOURNE PORTS	107,152	5.86	-2,388
CALWELL	109,034	7.72	-4,270
ISAACS	109,577	8.25	-4,813
MELBOURNE	112,694	11.33	-7,930
HOLT	121,943	20.47	-17,179
MCEWEN	122,829	21.35	-18,065
GORTON	126,751	25.22	-21,987
LALOR	129,351	27.79	-24,587

*La Trobe figures based on updated electors disbursed to McMillan as per The Nationals submission.

The drafting of boundaries to cover the metropolitan seats can be achieved in any number of different variations and The Nationals submission does not seek to design one particular formation of these boundaries.