



# COMMONWEALTH OF AUSTRALIA STATE OF QUEENSLAND

Map of the Commonwealth Electoral Divisions of :

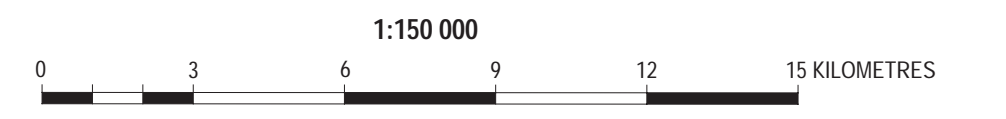
**BONNER (PART), BOWMAN, BRISBANE (PART), DICKSON (PART),  
FAIRFAX, FISHER (PART), LILLEY (PART), LONGMAN,  
PETRIE, RYAN, and WIDE BAY (PART)**

**FISHER**

Boundaries and Names of Commonwealth Electoral Divisions shown thus

**ESK**

Boundaries and Names of Local Government Areas shown thus

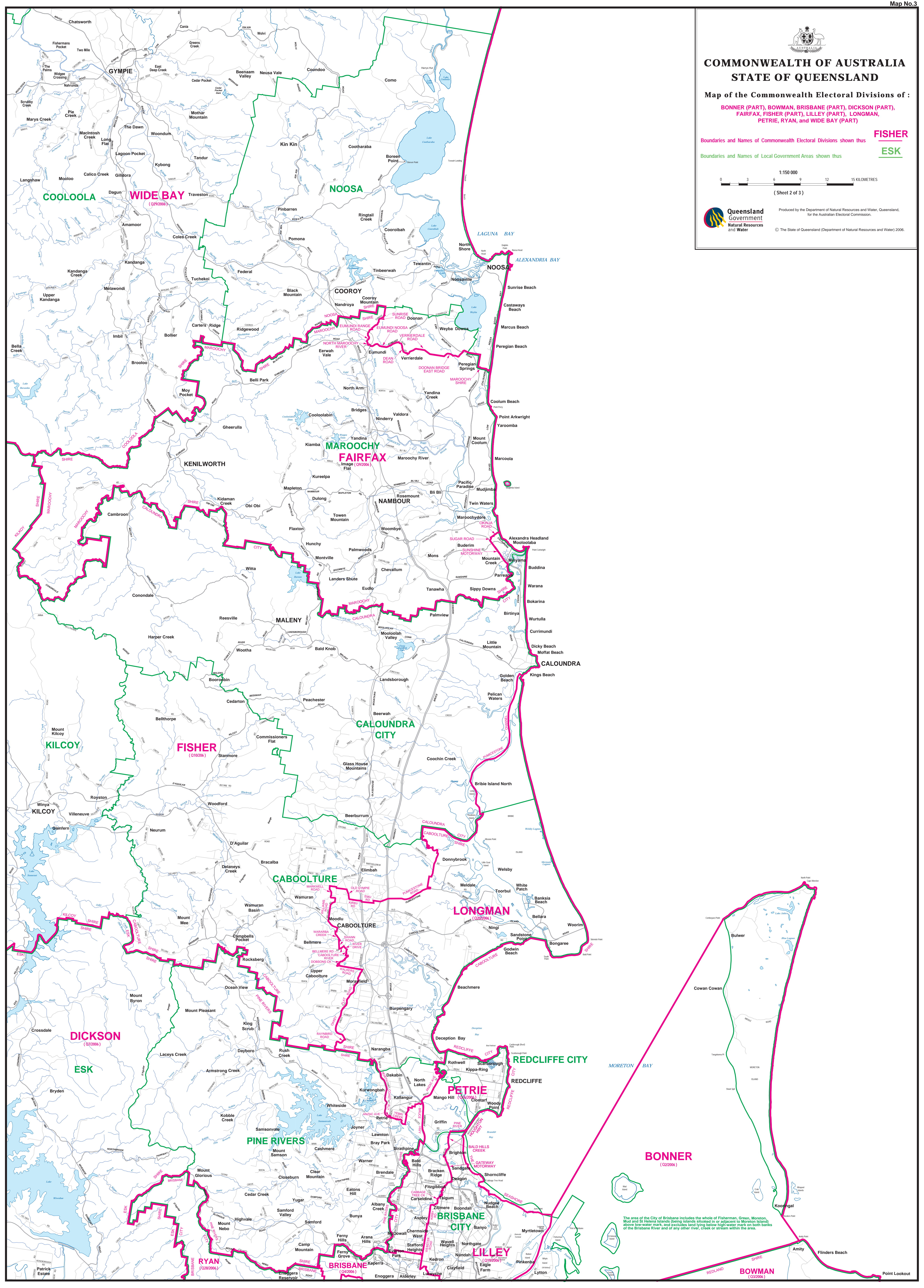


(Sheet 2 of 3)



Produced by the Department of Natural Resources and Water, Queensland,  
for the Australian Electoral Commission.

© The State of Queensland (Department of Natural Resources and Water) 2006.



The area of the City of Brisbane includes the whole of Fisherman, Green, Moreton, Mud and St Helena Islands (being islands situated in or adjacent to Moreton Island) above low-water mark, and includes land lying below high-water mark on both banks of the Brisbane River and of any other river, creek or stream within the area.