



2006

Commonwealth Electoral Act 1918

Map of the Proposed Commonwealth Electoral Divisions of

CHARLTON, DOBELL, GREENWAY, MACQUARIE, NEWCASTLE, ROBERTSON and SHORTLAND

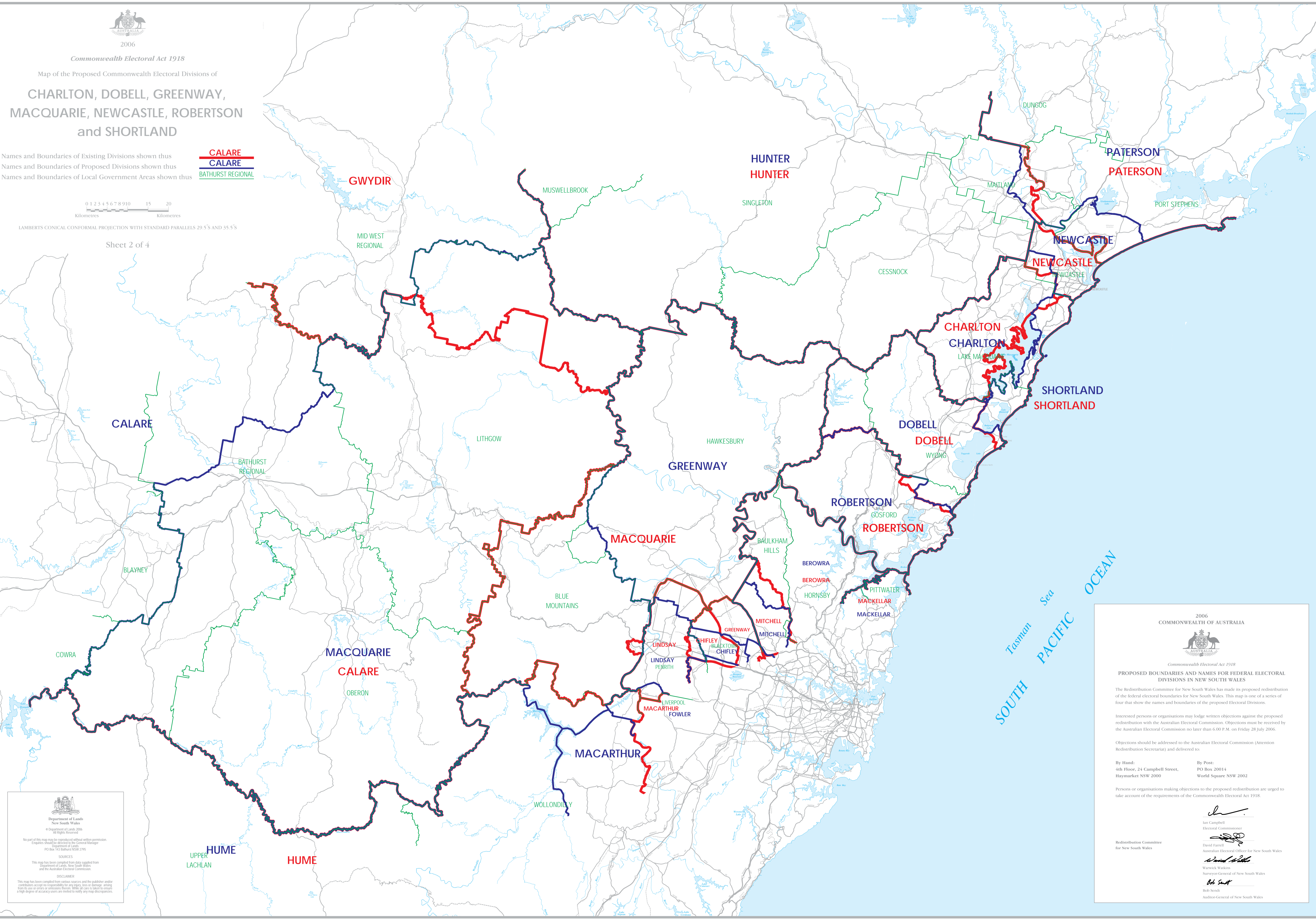
Names and Boundaries of Existing Divisions shown thus
Names and Boundaries of Proposed Divisions shown thus
Names and Boundaries of Local Government Areas shown thus

CALARE
CALARE
BATHURST REGIONAL



LAMBERTS CONICAL CONFORMAL PROJECTION WITH STANDARD PARALLELS 29.5°S AND 35.5°S

Sheet 2 of 4



Department of Lands
New South Wales
© Department of Lands 2006
All rights reserved.
No part of this map may be reproduced without permission.
Enquiries should be directed to the General Manager
Department of Lands
PO Box 143 Bathurst NSW 2795
SOURCES
This map has been compiled from data supplied from
Department of Lands, New South Wales
and the Australian Electoral Commission.
DISCLAIMER
This map has been compiled from various sources and the publisher and/or
contributors accept no responsibility for any errors, omissions or damage
arising from its use or errors or omissions therein. While all care is taken to ensure
a high degree of accuracy users are invited to verify any map discrepancies.

2006
COMMONWEALTH OF AUSTRALIA

Commonwealth Electoral Act 1918

PROPOSED BOUNDARIES AND NAMES FOR FEDERAL ELECTORAL DIVISIONS IN NEW SOUTH WALES

The Redistribution Committee for New South Wales has made its proposed redistribution of the federal electoral boundaries for New South Wales. This map is one of a series of four that show the names and boundaries of the proposed Electoral Divisions.

Interested persons or organisations may lodge written objections against the proposed redistribution with the Australian Electoral Commission. Objections must be received by the Australian Electoral Commission no later than 6.00 P.M. on Friday 28 July 2006.

Objections should be addressed to the Australian Electoral Commission (Attention Redistribution Secretariat) and delivered to:

By Hand: 4th Floor, 24 Campbell Street, Haymarket NSW 2000
By Post: PO Box 20014, World Square NSW 2002

Persons or organisations making objections to the proposed redistribution are urged to take account of the requirements of the Commonwealth Electoral Act 1918.

Redistribution Committee for New South Wales

Electoral Commissioner: Ian Campbell
Australian Electoral Officer for New South Wales: David Farrell
Surveyor-General of New South Wales: Warwick Watkins
Auditor-General of New South Wales: Bob Smith