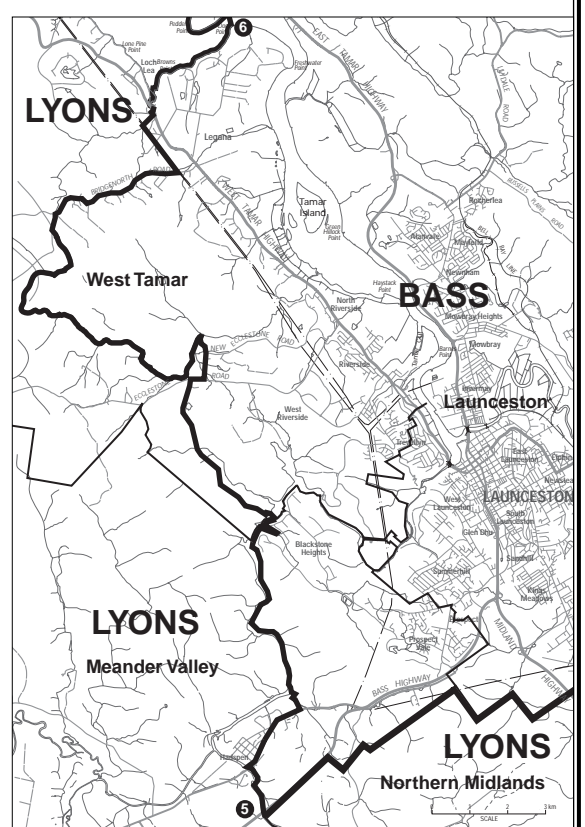
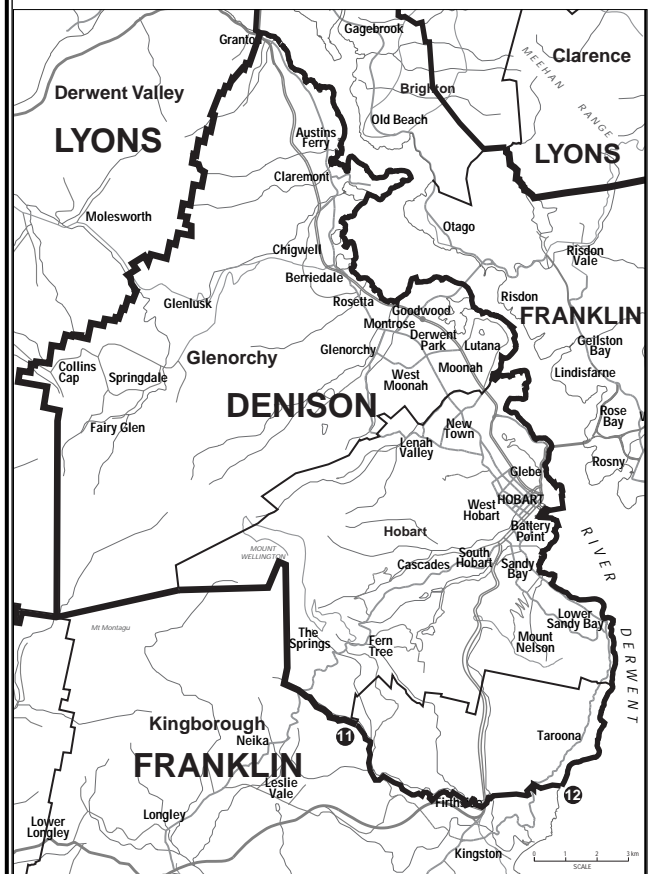
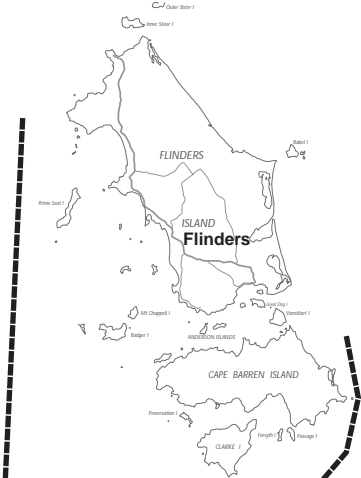


- Proposed New Boundaries.
- Area of boundary change.
- Existing Local Government Boundaries.
- Existing Boundaries which are to be changed.

**NOTE:** All Proposed New Electoral Division boundaries follow existing Local Government boundaries except for:

- ①-② Boundary follows the former Portland Municipality (LD999).
- ③-④ Boundary follows the former City of Launceston boundary (LD853).
- ⑤-⑥ Boundary follows the eastern side of the South Esk River, the northern side of the Bass Highway, the centreline of creek near Beams Hollow, the eastern side of Lake Trevallyn, the western side of a vehicular track south of Five Logs Bay, the northern side of Ecclestone Road, the western side New Ecclestone Road, the western side of a vehicular track, the centreline of Cormiston Creek and Muddy Creek, the northern side of a transmission line and the centreline of Muddy Creek to the River Tamar.
- ⑦-⑧ Boundary follows the former Esperance Municipality (LD1024).
- ⑨-⑩ Boundary follows the town boundaries of Bridgewater and Gagebrook, the western side of a transmission line and part of the former City of Clarence boundary (LD1032).
- ⑪-⑫ Boundary follows the centreline of Long Creek and Browns River, the southern boundary of Bonnet Ridge Estate (refer to P20498 & SP19085 Lands Titles Office), the centreline of Channel Highway and the centreline of a creek at the north of Taronga to the River Derwent.



Redistribution Committee for Tasmania  
Hobart  
3rd August 1999

*W. Gray*  
.....Presiding Member  
W. Gray, Electoral Commissioner

*A Stanelos*  
.....  
A Stanelos, Acting Australian Electoral Officer for Tasmania

*C Rowe*  
.....  
C Rowe, Surveyor General of Tasmania

*A McHugh*  
.....  
A McHugh, Auditor-General of Tasmania