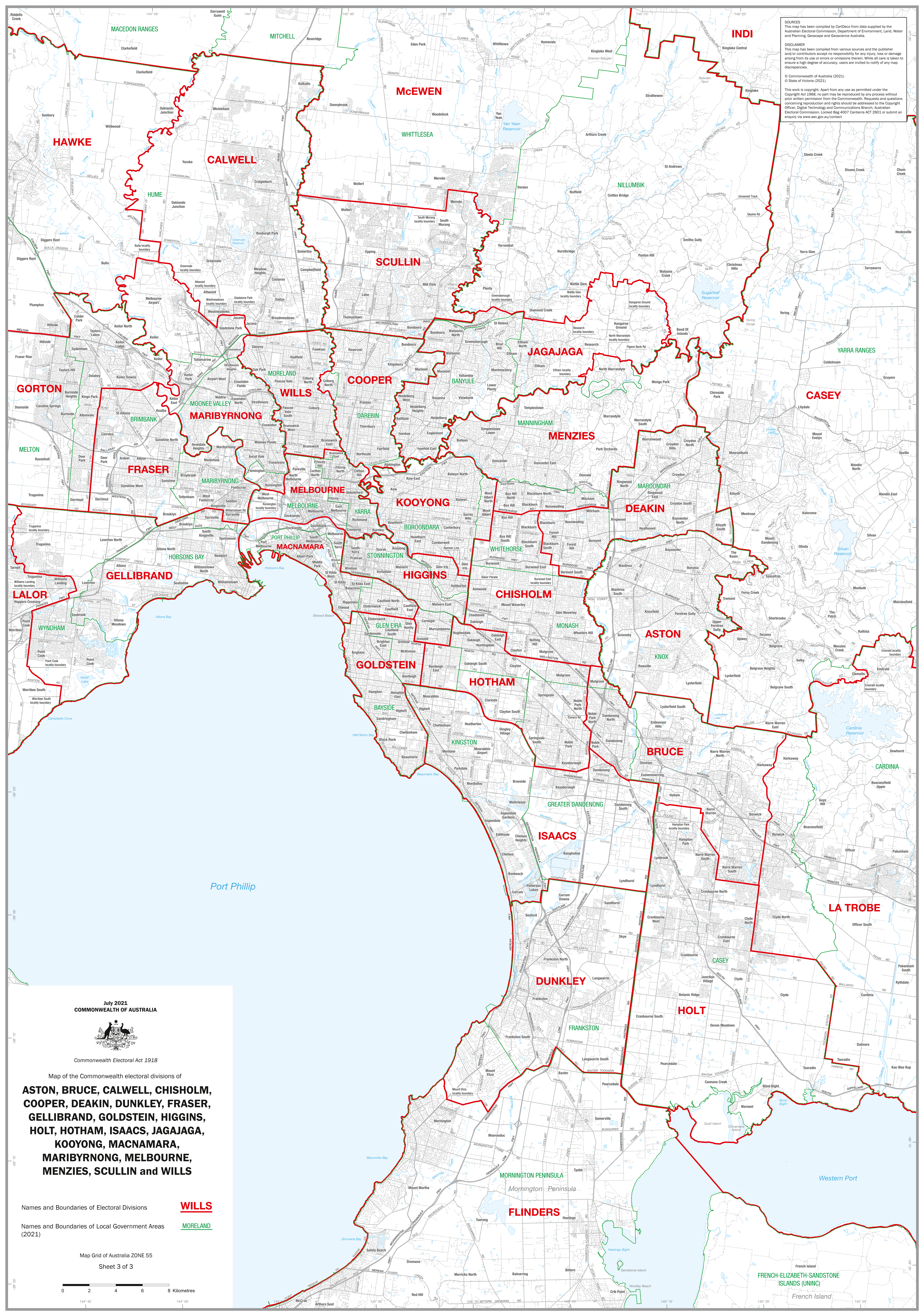


**SOURCES**  
 This map has been compiled by CartDeco from data supplied by the Australian Electoral Commission, Department of Environment, Land, Water and Planning, Geoscape and Geoscience Australia.


**DISCLAIMER**  
 This map has been compiled from various sources and the publisher and/or contributors accept no responsibility for any injury, loss or damage arising from its use or errors or omissions therein. While all care is taken to ensure a high degree of accuracy, users are invited to notify of any map discrepancies.

© Commonwealth of Australia (2021)  
 © State of Victoria (2021)

This work is copyright. Apart from any use as permitted under the Copyright Act 1968, no part may be reproduced by any process without prior written permission from the Commonwealth. Requests and questions concerning reproduction rights should be addressed to the Copyright Officer, Digital Technology and Communications Branch, Australian Electoral Commission, Locked Bag 4007 Canberra ACT 2603 or submit an enquiry via [www.aec.gov.au/contact](http://www.aec.gov.au/contact)



July 2021  
**COMMONWEALTH OF AUSTRALIA**



Commonwealth Electoral Act 1918

Map of the Commonwealth electoral divisions of  
**ASTON, BRUCE, CALWELL, CHISHOLM, COOPER, DEAKIN, DUNKLEY, FRASER, GELLIBRAND, GOLDSTEIN, HIGGINS, HOLT, HOTHAM, ISAACS, JAGAJAGA, KOOYONG, MACNAMARA, MARIBYRNONG, MELBOURNE, MENZIES, SCULLIN and WILLS**

Names and Boundaries of Electoral Divisions **WILLS**

Names and Boundaries of Local Government Areas (2021) **MORELAND**

Map Grid of Australia ZONE 55  
 Sheet 3 of 3

